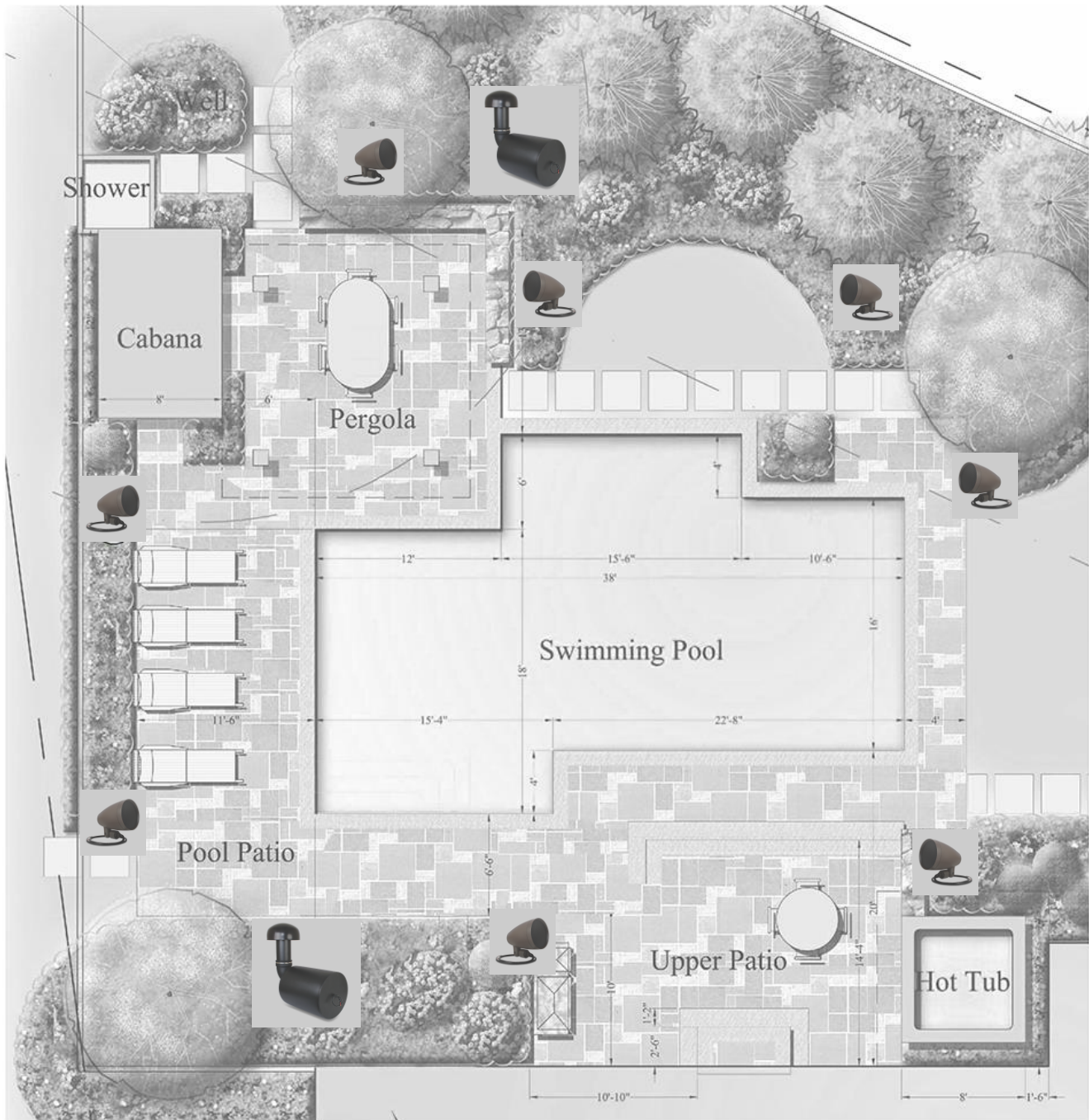


# Landscape Speaker Design



## Notes:

1. Each speaker can cover 300 square feet but with a few more speakers you will get a more consistent volume.
2. Four speakers can cover 1200 square feet but in reality having more speakers will make a huge difference in sound quality.
3. When placing speakers not only place them on the ground but also place them higher up, like in a tree or on a wall, this will give the end user a better listening area.

