



# **USER'S MANUAL**

*Intelligent Remote Management Card  
allows a UPS system to be managed,  
monitored, and configured*

**Version 1.0**

# TABLE OF CONTENTS

Introduction.....	3
Installation Guide.....	5
Web Interface.....	10
Reset to Default Setting / Recover from a Lost Password.....	17
Firmware Upgrade.....	18
Trouble Shooting.....	19
Appendix.....	20

## INTRODUCTION

### Overview

The Remote Management Card allows for remote monitoring and control of a UPS connected to a network. After installing the hardware and configuring an IP address, the user can access, monitor, and control the UPS from anywhere in the world. Simply use the web browser of your choice to access your UPS. Servers and workstations can be protected by the UPS utilizing the PowerPanel Business Edition Client version to safely shutdown when signaled by the Remote Management Card.

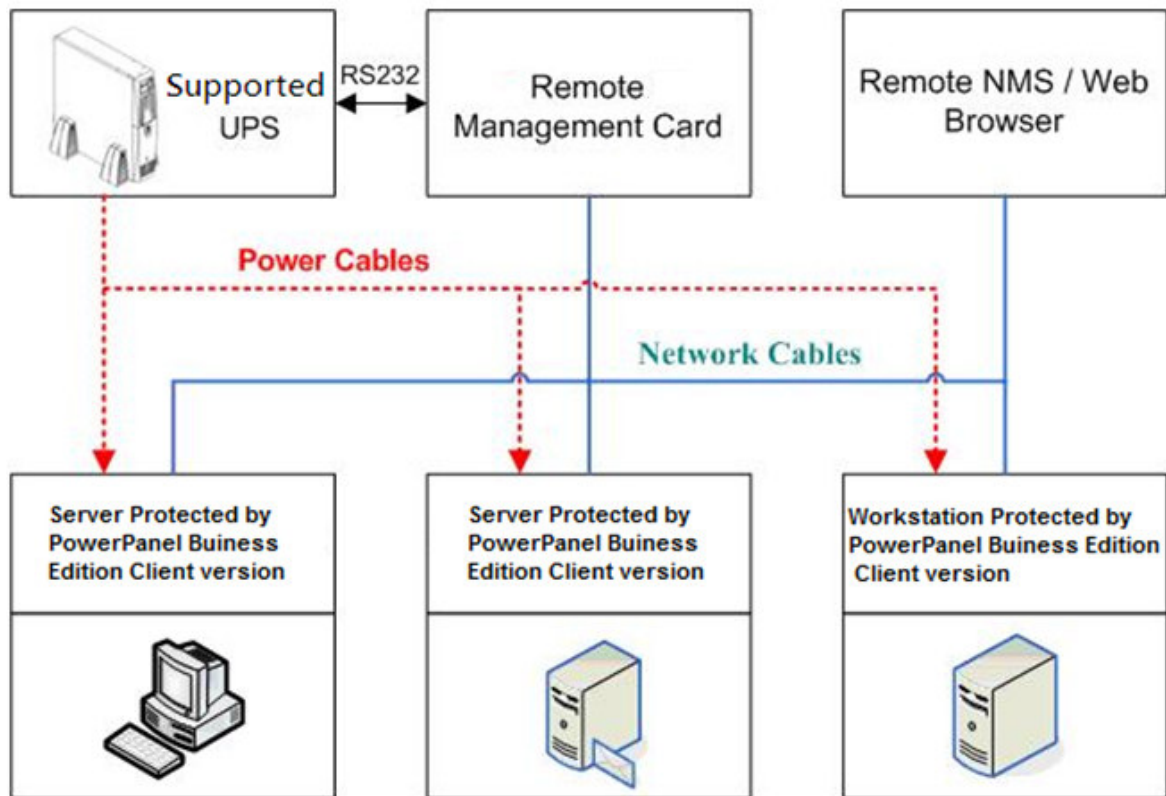
### Features

- Real-time UPS monitoring
- Remote management and configuration of UPS via Web Browser or NMS
- Auto-shutdown to protect servers/workstations from data lose due to power failure
- Schedule shutdown/start-up/reboot of the UPS via remote control
- Event logging to trace UPS operational history
- Data logging for analyzing power conditions
- Event notification via email and SNMP traps
- Support TCP/IP, UDP, SNMP/HTTP, NTP, DNS, SMTP protocol
- SNMP MIB provided
- Quick installation and user friendly interface
- User upgradeable firmware via FTP
- Security management provided

### System Requirements

- A computer with a Windows or Linux Operating System (for optional PowerPanel Business Edition Client)
- An Ethernet connection to an existing network
- NMS (Network Management Station) compliant with SNMP (for optional NMS management)

## Application:



## Unpacking

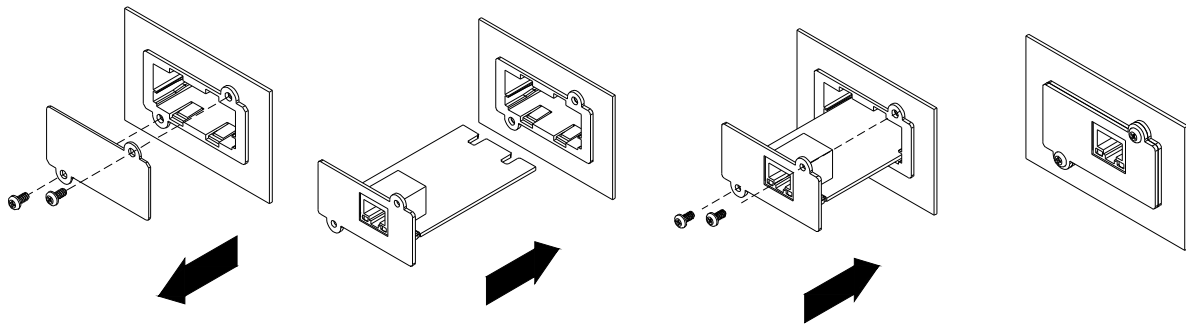
Inspect the Remote Management Card upon receipt. The package should contain the following:

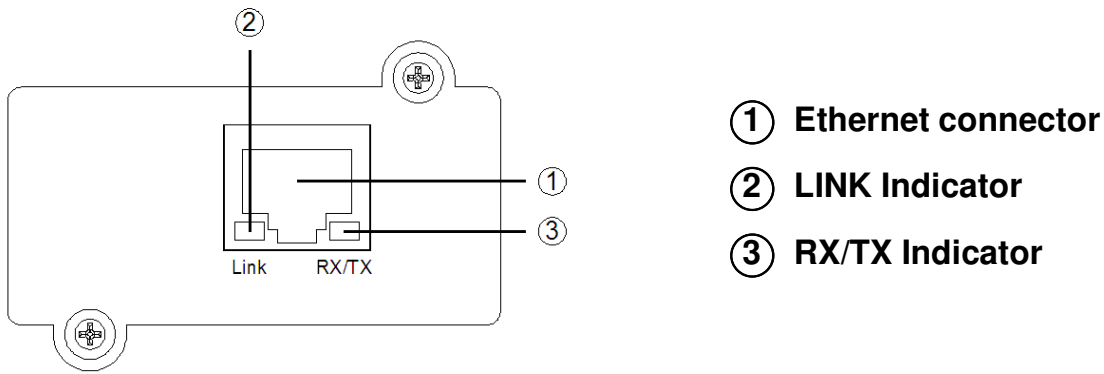
- Remote Management Card
- PowerPanel Business Edition CD with software and user manuals

## INSTALLATION GUIDE

### Step 1. Hardware Installation

1. Turn off the UPS before removing the expansion port cover on the UPS.
2. Remove the two retaining screws from the expansion port cover and remove the cover.
3. Install the Remote Management Card into the expansion port.
4. Re-install and tighten the retaining screws.
5. Connect the Ethernet cable to the LAN port on the Remote Management Card.
6. Turn on the UPS.





- ① Ethernet connector
- ② LINK Indicator
- ③ RX/TX Indicator

### Definitions for LED Indicators

Link LED color	Condition
Off	The Remote Management Card is not connected to the Network/ or the UPS is off
On(Yellow)	The Remote Management Card is connected to the Network
TX/RX LED color	
Off	The Remote Management Card power is off
On(Green)	The Remote Management Card power is on
Flash	- Receiving/transmitting data packet - Reset finished

### Step 2. Configure the IP address for the Remote Management Card.

#### Method 1: Using the Power Device Network Utility Tool

1. Install the Power Device Network Utility Tool from the included CD. It is located on the CD in the \tools\network folder. Double click the "Power Device Network Utility" installation file, "Setup.msi" to begin the installation.
2. After installation is complete, run the "Power Device Network Utility" program. Under "All Programs, Select "Power Device Network Utility".
3. The main dialog of the "Power Device Network Utility Tool" program is shown in Figure. 1. The configuration tool will display all Remote Management Cards of present on the same network. The "Refresh" button is used to search the entire local network for Remote Management Card.

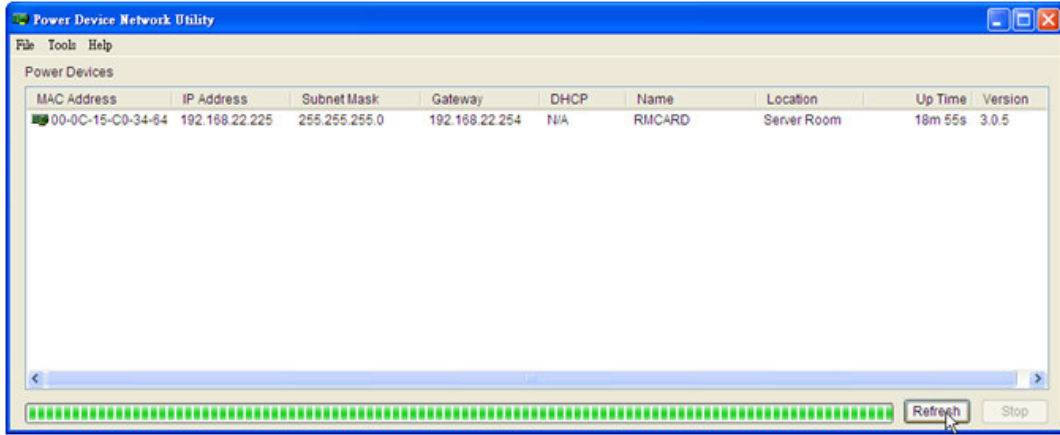


Figure 1. The main window of the “Power Device Network Utility” program.

4. Select the Remote Management Card you are setting up. Click on the Tools menu and select “Device Setup,” or double-click the Remote Management Card you want to configure.
5. You can modify the IP Address, Subnet Mask, and Gateway address for the Device MAC Address listed in the Device Network Settings window, as shown in Figure 2.

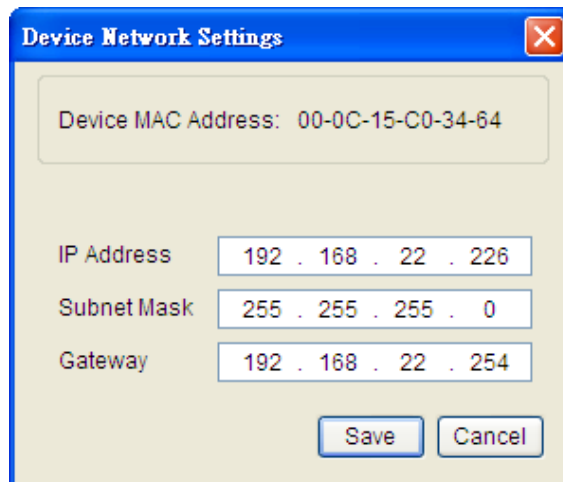


Figure 2. The network card setting window.

6. To modify the IP Address, Subnet Mask or Gateway address, enter the new addresses into the corresponding fields.
7. You will need to enter a User Name and Password for the Remote Management Card in the authentication window, as shown in Figure 3.

Default user name: admin

Default password: admin

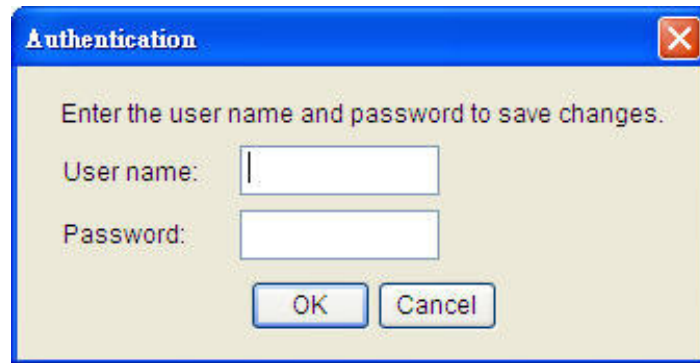


Figure 3. Authentication window.

8. If IP address is successfully set, you will see a message that the IP set up is OK, as shown in Figure 4.

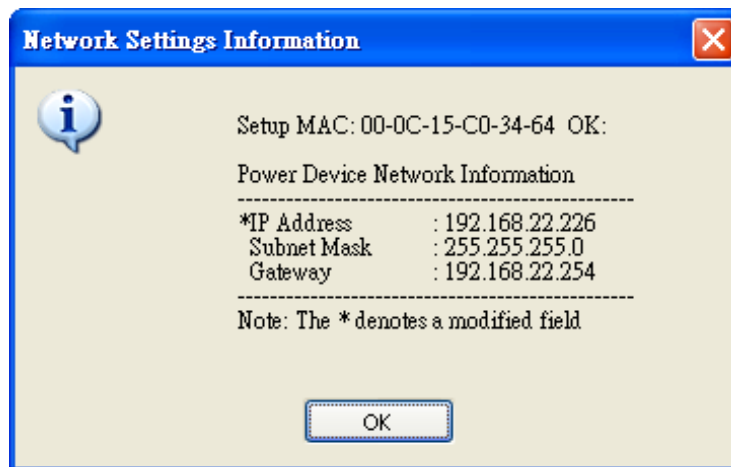


Figure 4. Setup IP Address Successful message.



## Method 2: Using a command prompt

1. Obtain the MAC address from the label on the Remote Management Card rear panel. Each Management card has a unique MAC address.
2. Use the ARP command to set the IP address.

Example:

To assign the IP Address 192.168.20.240 for the Remote Management Card, which has a MAC address of 00-0C-15-00-00-01, you will type in the following command prompt from a PC connected to the same network as the Remote Management Card.

1. Type in “arp -s 192.168.20.240 00-0C-15-00-00-01” then press Enter.
3. Use the Ping command to assign a size of 123 bytes to the IP.
    1. Type in “ping 192.168.20.240 -l 123” then press Enter
    2. If the replies are received, your computer can communicate with the IP address.

To select an IP address for the Remote Management Card, please refer to Appendix 1.

## WEB INTERFACE

### Login Account

There are two user account types.

- Administrator (default username : **admin** ; default password : **admin**)
- Viewer (default username : **guest** ; default password : **guest**)

The Administrator can access and control all functions, including enable/disable of the Viewer account. The Viewer's access allows them read permissions for all functions, but they cannot control or change any settings.

*Note: The Administrator account is also used for the FTP log in and authentication. Check in the Power Device Network Utility.*

### Web Content

**[Summary]** provides an overview of the system operation and the items that are auto-refreshed.

Item	Definition
Current condition	Display the current operating condition of UPS
Battery Capacity	The percentage of the current UPS battery capacity in a graph.
Load	The load of UPS as a percentage of available Watts in a graph.
Remaining runtime	Remaining time the UPS can support its load by battery power.
Name	The name of UPS used for identification.
Location	The location of the UPS.
Contact	The person accountable for the maintenance of the UPS.
Uptime	Time the system has been working continuously.
Recent Device Events	A list of events that recently occurred.

**[UPS->Status]** Displays basic information about the current UPS status, and the items that are auto-refreshed.

item	Definition
Line Voltage	Current input voltage of the utility power.
Output Voltage	The output voltage of the UPS.
Output Frequency	The frequency of output power.
Output Load	The UPS load expressed as a percentage of available total available watts of the UPS Watts.
Remaining Capacity	The percentage of the current UPS battery capacity.
Remaining Runtime	Remaining time the UPS can support its load by battery power.
Temperature	Internal temperature of the UPS

**[UPS->Information]** Provides the technical specifications for the UPS.

Information	Description
Model Name	The model name of the UPS.
Voltage Rating	The rating of the AC voltage to the UPS.
Working Frequency	The frequency of the UPS output power.
Power Rating	The capacity of the UPS in VA.
Load Power	The capacity of the UPS in Watts.
Battery Voltage Rating	The DC voltage rating of the battery set.
Firmware Version	The version number of the UPS firmware.

**[UPS->Configuration]** Configures the parameters of the UPS.

Audible Alarm	Enable or disable the audible alarms that signal the different conditions of the UPS.
---------------	---

**[UPS->Master Switch]** Switches the output power of the UPS to be on or off.

Items	Definition
Reboot UPS	Turns the UPS off and back on
Turn UPS Off	Turns the UPS off.
UPS Sleep	Turning the UPS off and back on after a period of time.
Cancel Switch	Cancels a pending action to turn the UPS off.
Turn UPS On	Turns the UPS on.
Shutdown Delay	Length of time the UPS waits before it turns off in response to a "Reboot UPS", "Turn UPS off" or "UPS Sleep" command.
Reboot Duration	After the UPS is turned off, Reboot Duration defines how long the UPS waits before its turned back on in response to "Reboot UPS" command.
Sleep Duration	After the UPS is turned off, Sleep Duration defines how long the UPS waits before it is turned back on in response to "Sleep UPS" command.
Signal Clients to Shutdown	Select this option to warn PowerPanel Business Edition Clients before UPS turning off. The Shutdown Delay for the UPS can be revised to insure a graceful shutdown.

**[UPS->Diagnostics]** When a power failure occurs, the UPS immediately supplies battery power to all connected equipment. The UPS must have sufficient runtime for all connected computers to be shut down properly.

The **UPS/Diagnostics** page provides the ability to verify the UPS can supply adequate battery runtime for the connected computers to shutdown properly. Perform a complete runtime calibration to ensure an accurate estimate of the runtime for the connected load.

### **Battery Test**

The **Battery Test** performs a battery test to verify the batteries are good and provides information on the battery, including the results and date of the last battery test. Click the **Initiate** button to begin a battery test.

Performing a battery test is prohibited when the **Frequency Working Mode** option is set to *fixed*. If performing a battery test on the fixed frequency mode, a UPS fault may occur and cause the UPS to enter bypass mode. The frequency on bypass mode may not be acceptable and damage the connected equipment.

The results will be reported after a battery test completes:

**Last Test Date:** The date the last battery test was performed.

• **Last Test Result:** The results of the last battery test:

**Passed:** The battery performed normally during the test.

**None:** The UPS has never performed the battery test.

**Failed:** The battery test resulted in failure.

Follow the steps below if the battery test fails:

Repeat the battery test and replace the batteries if the test fails again.

### **Runtime Calibration**

The **Runtime Calibration** ensures the runtime estimate is accurate with the load and the current battery capacity. The results show the runtime, the results, and the date of the last calibration. When a runtime calibration is initiated, the connected equipment will be run on battery power until the batteries are completely discharged. Following the Runtime Calibration, the UPS will automatically begin recharging the batteries.

Users can click the **Start** button to initiate a runtime calibration. Click the **Abort** button to stop the runtime calibration. The result will be reported after a calibration is finished or canceled:

- **Estimated Runtime:** The estimated runtime of the batteries.
- **Last Calibration Result:** The results of the last runtime calibration.
  - Passed:** The runtime calibration was completed and the batteries are good.
  - None:** The UPS has never performed a runtime calibration.
  - Failed:** The UPS failed during the runtime calibration.
  - Abort:** The calibration was stopped. \*When aborted, the result still shows as “Passed”
- **Last Calibration Date:** The date the last runtime calibration was performed.

**Note:** *It is recommended to perform at least one calibration every 3 months. Note: A complete calibration causes the battery capacity to deplete. Ensure the UPS has recharged completely after performing a calibration.*

**[UPS-> Schedule]:** Sets the UPS to automatically shutdown and restart at scheduled times, (Special, Weekly, or Daily). The **Schedule** page manages scheduled shutdowns and lists all configured schedules. Each schedule row displays the details of when the schedule will take effect and when to perform it.

[Once]: The user may set a specific date and time for the UPS shutdown.

[Per Week]: Set a specific day and time of the week for the UPS shutdown.

[Per Day]: Set a specific time of the day for the UPS shutdown.

1. Click [Once], [Per Week] or [Per Day] option and Click “Next>>”, Click [Enable] if you want it active immediately, Enter the date and time to shut down the UPS. Select [Never], [Immediately], or the date and time for the UPS to recover power. Click “Shutdown Clients” to set all clients to perform a graceful shutdown. You can enter a comment for this Schedule.
2. Click [Apply] to add the item to the Schedule. Click [Cancel] to remove the item from the Schedule.
3. Applied settings are listed in [Schedule] menu.

**Note:** *The management system allows up to 10 scheduled settings.*

**[Logs->Event Logs]** Displays a list of events along with a date and time stamp, and a brief description of event.

*Note: The events recorded will be listed under “System->Event Action”*

**[Logs->Status Records]** This page is used to view the logs of the UPS status.

All items have the same definition as they are in the UPS status. Except for:

Input min(V) The minimum input voltage of the UPS from the previous record.

Input max(V) The maximum input voltage of the UPS from the previous record.

**[Logs->Maintain]** This page is used to maintain “Event Logs” and “Status Records”. The application provides information on how long the Status records can be before it is full.

Items	Definition
Clear event logs	Delete the existing event logs
Recording Interval	Set the frequency to record the status data. A smaller interval will provide more frequent recordings but maintain them for a shorter period. A larger interval will provide less frequent recordings, but maintain them for a longer period.
Clear Entire Records	Clears the existing Data records.

**[System->User Account]** This page is used to change the login account.

Change Administrator account:

- Enter the current User name
- Enter the current Password to verify the user
- Enter the new password
- Confirm the new password
- Click “Apply”

Change Viewer account:

- Select “Allow Access” to enable the Viewer account
- Enter the User Name
- New Password
- Confirm the New Password
- Click “Apply”

**[System->Date & Time]** This page displays the time on the card and allows you to set the date and time. To set the date and time, you can choose to set manually or by using the NTP (Network Time Protocol) server.

**Manual setup:** Enter the date and time in the designated format.

**Using NTP server:** Enter the IP address/domain name of NTP servers, choose the time zone, and set the frequency to update the date and time from NTP server. Choose "Update right now" to update immediately.

**[System->Identification]** Assign the system's name, contact, and location.

Items	Definition
Name	The name used to identify the UPS.
Contact	The person to be contacted for issues..
Location	The location of the UPS.

**[System->Security]** Sets for security.

Items	Definition
Timeout	The period (in minutes) that the system waits before auto-logging off

**[System->Event Action]** Displays the event actions for each event. You can set the event actions to execute when the specific event occurs. The following events actions can be setup.

- Log : Record the event if the "Event Logs"
- E-mail : Sent an email to specific user.(An available SMTP server is necessary)
- Trap : A SNMP trap sent to a specific IP address.

**[System->SMTP Server]** After setting the proper SMTP server, the UPS can send an email to users when specific event occurs.

Items	Definition
Server's IP/Host Name	The name of the UPS used for identification.
Sender's E-mail Address	The person to contact when an email is sent.
Authentication	Select this option if the SMTP server needs Authentication check.
Username	Username used for Authentication.
Password	Password used for Authentication.

**[System->E-mail Recipients]** Set up to five e-mail recipients in designated email address format. The Recipients will receive an e-mail notification when events occur.

**[System->Trap Receivers]** Set up to ten trap receivers in the IP format. The receiver will receive a SNMP trap when an event occurs. When the PowerPanel Business Edition Client connects to the UPS, the IP address of the PowerPanel Business Edition Client will be automatically added to the list of Trap Receivers.

**[System->Shutdown]**

Items	Definition
Clients Shutdown Delay	The Longest shutdown delay time required for connected PowerPanel Business Edition Client.
Force Negotiation	Select to renegotiate the Clients Shutdown Delay with connected PowerPanel Business Edition Client .The Clients Shutdown Delay will return to a default of 2 minutes, and the negotiation time is up to 10 minutes to finish.

**[System->TCP/IP]** Display the current TCP/IP settings: IP address, subnet mask, gateway, DNS server. Also provides the function to obtain TCP/IP settings from the DHCP server.

- DHCP server: Select the “Obtain IP Address” option and click Apply to get IP address, subnet mask, gateway by DHCP. Select the “Obtain DNS Address” option and click Apply to get the IP of DNS from the DHCP.
- Manual : Enter the TCP/IP settings directly and click Apply.

**[System->HTTP service]** Select the TCP/IP port of the Hypertext Transfer Protocol (HTTP) (80 by default).

**[System->SNMP service]** Allows you to select the NMS, defined by the IP settings that can use the channel to control the system data access through SNMP.

Items	Definition
SNMP service Allow Access	Set the SNMP service to either Enable or Disable
SNMP Access Control Community name	The name used to access this community by a Network Management System(NMS) The field must be 1 to 15 characters length.
SNMP Access Control IP	The IP address or IP address mask can accessed by NMS. A specific IP address allows access only by the NMS with the specified IP Address. The 255 is regarded as the mask and the rules are as follows: <ul style="list-style-type: none"> <li>• 192.168.20.255: Access only by an NMS on the 192.168.20 segment.</li> <li>• 192.255.255.255: Access only by an NMS on the 192. segment.</li> <li>• 0.0.0.0 (the default setting) or 255.255.255.255 : Access by any NMS on any segment.</li> </ul>
Access type	The allowable action for the NMS through the community and IP.
Read only	Gets at anytime but cannot SETS.
Write/Read	Gets at anytime, SETs anytime unless someone is logged in the Web interface.
Forbidden	No GETS or SETS.



**[System->FTP service]** Allows you to enable/disable the FTP server service and configure the TCP/IP port of the FTP server (21 by default).

**Note :** The FTP server is used for upgrading Firmware. For more details on the upgrade process please refer to “Firmware Upgrade” section of this Manual.

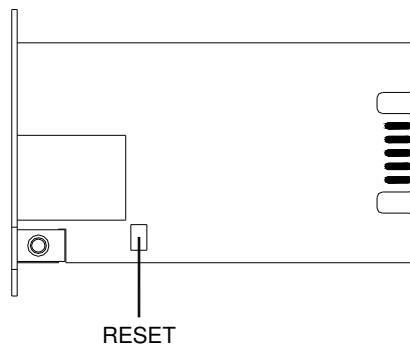
**[System->Preference]** Allows you to select the temperature unit (Celsius/Fahrenheit).

**[System->About]** Displays vital information for the Remote Management Card.

Items	Definition
Model name	Model name of the Remote Management Card
Firmware version	The revision numbers of the firmware currently installed on Remote Management Card.
Firmware updated date	The date the firmware was last updated.
Hardware revision	The hardware version for the Remote Management Card.
MAC address	MAC address for the Remote Management Card. Note: the MAC address is also listed on the top of the Remote Management Card .

### Reset to Default Setting / Recover from a Lost Password

To reset the Remote Management Card to its default setting (including WEB log-in user name and password), please use the following steps:



1. Remove the two retaining screws on the card without turning off the UPS.
2. Uninstall the card.
3. Take off the jumper on the Reset pins as illustrated. (The jumper is still necessary after reset , please do not lose or dispose of it)
4. Re-install the card into the expansion port.
5. Wait until the Green LED is flashing (the frequency of the ON/OFF flashing is one second).
6. Uninstall the card again.
7. Place the jumper back onto the Reset pins.
8. Install card into the expansion port again.
9. Tighten the retaining screws.

## Firmware Upgrade

By upgrading the Firmware, you can obtain both the new features and updates/improvements to existing functionality. There are two files to update in order to upgrade the firmware version:

- rmcardsfw\_XXX.bin
- rmcardsdata\_XXX.bin

Use the following steps to upgrade the firmware.

1. Download the latest Firmware.
2. Extract the file to "C:\"
3. Open a command prompt window
4. Login to the Remote Management Card with FTP command, type
  - ftp
  - ftp> open
  - To [ip] [port] ; EX: To 192.168.22.126 21
  - Input USER NAME and PASSWORD (same as the administrator account in Web interface default : admin ; admin)
5. Upgrade the rmcardsfw\_XXX.bin , type
  - ftp > bin
  - ftp > put rmcardsfw\_XXX.bin
6. Upgrade complete , type
  - ftp > quit
7. The system will reboot after you type "quit"
8. Login to the FTP again
  - ftp
  - ftp> open
  - To [ip] [port] ; EX: To 192.168.22.126 21
  - Input USER NAME and PASSWORD
9. Input USER NAME and PASSWORD Upgrade rmcardsdata\_XXX.bin
  - ftp > bin
  - ftp > put rmcardsdata\_XXX.bin
10. Upgrade complete , type
  - ftp > quit
11. The system will reboot after you type "quit"

You can check to see if the firmware upgrade was successful by checking the "Firmware version" on the [System->About] webpage.

Note : Please do not turn the UPS off when processing the Firmware upgrade.

## Trouble Shooting

Problem	Solution
<p>Unable to configure the Management Card by method1 or method2</p>	<p>1. Check the LED status, both yellow and green LED are on in normal conditions.  <u>If green LED is off:</u>            Check the Management Card for proper seating in the UPS and ensure the UPS power is on.  <u>If yellow LED is off:</u>            Ensure the network connection is valid.</p> <p>2. Ensure the PC being used is on the same physical network as Remote Management Card.</p>
<p>Unable to ping the Management Card</p>	<p>1. Use method 1 and method 2 to get correct IP address for the Remote Management Card.</p> <p>2. If the PC being used is on a different physical network from the Remote Management Card, verify the setting of subnet mask and the IP address of gateway.</p>
<p>Lost the user name and password</p>	<p>Please refer to the “Reset to Default Setting / Recover from a Lost Password” section of the user’s manual.</p>

## Appendix 1: IP Address Settings for the Remote Management Card

### Overview

All devices on a computer network need to have an IP address. Each device's IP address is unique. The same address cannot be used twice. In order to assign an IP address to the Remote Management Card, you must determine the range of the available IP addresses, and then choose an unused IP address to assign to the Remote Management Card.

**PLEASE NOTE:** You may need to contact your network administrator to obtain an available IP address.

Procedures to find an IP address:

#### 1. Locate the subnet of Remote Management Card.

One way to determine the range of possible IP addresses is to view the network configuration on a workstation. Click on [Start] and select [Run]. Type "command" into the open box and click [OK]. At the command prompt type "**ipconfig /all**" and press [Enter]. The computer will display network information as listed below:

```
Ethernet adapter
Connection-specific DNS Suffix.....: xxxx.com
Description.....: D-Link DE220 ISA PnP LAN adapter
Physical Address.....: 00-80-C8-DA-7A-C0
DHCP Enabled.....: Yes
Autoconfiguration Enabled ....: Yes
IP Address.....: 192.168.20.102
Subnet Mask.....: 255.255.255.0
Default Gateway.....: 192.168.20.1
DHCP Server.....: 192.168.20.1
DNS Servers.....: 211.20.71.202
                  168.95.1.1
```

#### 2. Select an IP Address for Remote Management Card

Verify the IP Addresses for the computer and the Remote Management Card belong to the same subnet. Refer to the above network information, the possible IP Address for the Remote Management Card could be 192.168.20.\* (\* hereafter represents any number between 1 and 255). Similarly, if the Subnet Mask is 255.255.0.0, the IP Address for Remote Management Card could be set up as 192.168.\*.\* to reach the same subnet with the computer.

To verify there is no other equipment connected to the network using the same IP Address, run "Ping 192.168.20.240" at the DOS Mode prompt when the IP Address you would like to set is 192.168.20.240. If the response is presented as below, the IP address is most likely not used and may be available for the Remote Management Card.

Pinging 192.168.20.240 with 32 bytes of data:

```
Request timed out.
Request timed out.
Request timed out.
Request timed out.
```

If the response is shown as below, the IP address is in use. Try another IP address until an available address is found.

```
Pinging 192.168.20.240 with 32 bytes of data:  
Reply from 192.168.20.240: bytes=32 time<10ms TTL=64  
Reply from 192.168.20.240: bytes=32 time<10ms TTL=64  
Reply from 192.168.20.240: bytes=32 time<10ms TTL=64  
Reply from 192.168.20.240: bytes=32 time<10ms TTL=64
```