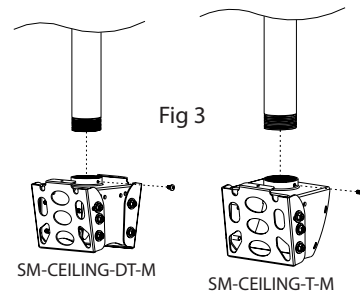


- d. Install Ceiling Plate Covers over ends of Ceiling Plate (optional).

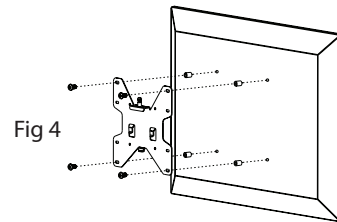
Step 3: Attach the Mount Head

- a. Screw the Mount Head on to the end of the Extension Pole and tighten Set Screw (Fig 3).



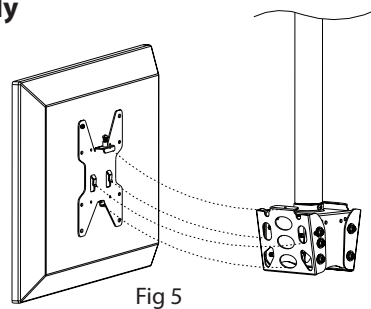
Step 4: Attach the Adapter Plate to the Display

- a. Attach the Adapter Plate to the display using M4, M5, M6, or M8 screws. For displays with a hole pattern in a pocket or inputs behind Adapter Plate, spacers go between Adapter Plate and display (Fig 4).



Step 5: Attaching the Adapter Plate with Display to Ceiling Mount Assembly

- a. Attach mount head to end of extension pole and tighten set screws.
b. Attach Adapter Plate and Display onto Wall Arm Assembly, ensuring all 3 hooks slide into holes of Mount Head (Fig 5).
c. Using a Philips Head Screwdriver, tighten down Locking Screw located on Adapter Plate into threaded hole in the Mount Head.



ADJUSTMENTS

Adjust Tilt

Tilt Adjustment

- a. Loosen screws on side of mount head. (Only enough to allow controlled adjustment)
b. Adjust Tilt forward or backward
c. Tighten screws on side of mount head to hold tilt.



Lifetime Limited Warranty
Strong™ Mounts have a Lifetime Limited Warranty. This warranty includes parts and labor repairs on all components found to be defective in material or workmanship under normal conditions of use. This warranty shall not apply to products which have been abused, modified or disassembled. Products to be repaired under this warranty must be returned to SnapAV or a designated service center with prior notification and an assigned return authorization number (RA).

For Technical Support call 1.866.838.5052

100823

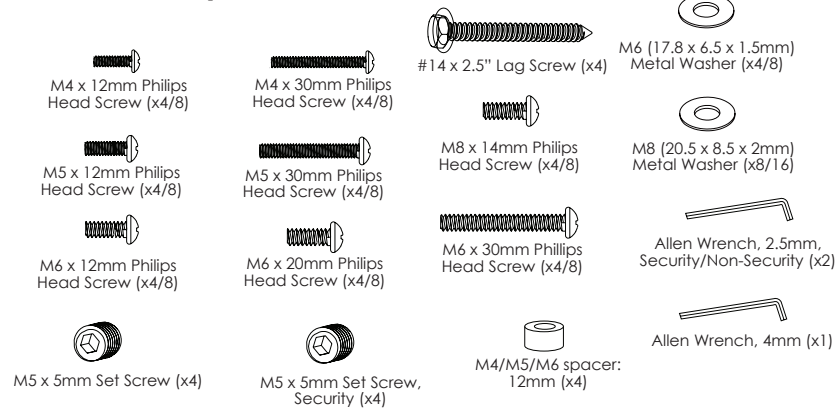
SM-CEILING-T-M SM-CEILING-DT-M

Strong™ Medium Ceiling Mount and Dual Ceiling Mount
for 22-40 in. Flat Panel TVs (Black)



engineered by
Snap
av

HARDWARE KIT (T/DT)



WARNINGS

- We highly recommend this product be installed by a qualified professional.
- Please do not begin installation until you have thoroughly read and understood these instructions.
- This mount supports display mounting from 22" to 40", VESA 75X75, 100x100, 200x100 & 200x200, and supports a maximum load of 80 lbs (36.4 kg).
- Ensure the wall that you plan to use will safely support four times the combined weight of the mount and your chosen display.
- Under no circumstances should this product be mounted to metal studs.
- The manufacturer does not accept responsibility for incorrect installation.

SPECIFICATIONS

- Maximum Load: 80 lbs. (36.4 kg)
- Display Size: 22" to 40"
- Extension: 3'
- Pan/Swivel Range: 360°
- Tilt Range: +0° / -20°

TOOLS REQUIRED

- Power Drill
- 3/16" (5mm) Drill Bit
- 5/16" (8mm) Masonry Bit
- Phillips Head Screw Driver
- 3/8" Socket Head Wrench
- 7/16" Socket Head Wrench

BOX CONTENTS (T/DT):

- Ceiling Plate(1)
- Ceiling Plate Cover (1)
- Mount Head(1)
- Adapter Plate(1/2)
- Hardware kit (1)
- 3' Fixed Extension Pole(1)



CAUTION:

These ceiling mounts are intended for use only with the maximum weight of 80 lbs (36.4kg).

INSTALLATION INSTRUCTIONS

Step 1: Use Ceiling Plate to Mark Mounting Hole Locations

- The use of a stud finder is highly recommended.

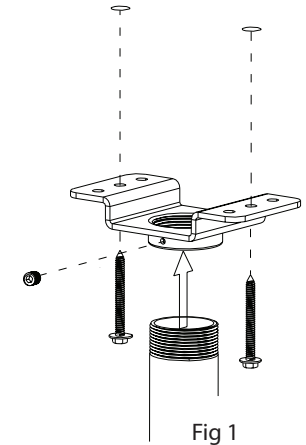
Step 2: Mount the Ceiling Plate

For Mounting on a Wood Joist (Fig 1)

- Pre-drill two holes into joist using a 3/16" drill bit. Be sure to drill into the center of the joists.
- Insert two Lag Screws into holes through the Ceiling Plate and tighten down.

WARNING: Tighten screws so that the Ceiling Plate is firmly attached, but do not over tighten. Over tightening can damage the screws, greatly reducing their holding strength.

- Thread in extension pipe and tighten set screws provided.
- Install Ceiling Plate Cover (optional).



For Mounting on a Concrete Ceiling (Fig 2)

Concrete anchors not provided. 5/16" x 2-1/2" Red Head® Hex Sleeve Anchors, #50113, are recommended for concrete or cinder block installation.

- Pre-drill four holes into concrete using 5/16" Masonry bit. Insert Hex Sleeve anchors (not supplied) and tap in with hammer (per instructions with wall anchor).

WARNING: When installing Ceiling Plate on cinder block, verify first that you have a minimum of 1-3/8" of concrete thickness to be used for the Concrete Wall Anchors (not included). Do not drill into mortar joints! Be sure to mount in a solid part of the block, generally 1" minimum from the side of the block. Cinder block must meet ASTM C-90 specifications. It is suggested that a standard electric drill on slow setting is used to drill the hole instead of a hammer drill to avoid breaking out the back of the hole when entering a void or cavity.

Concrete must be 2000 psi density minimum. Lighter density concrete may not hold concrete anchor.

Make sure that the supporting surface will safely support the combined load of the equipment and all attached hardware and components.

- Remove washer and nut from end of bolt from all four bolts. Place Ceiling Plate over bolts so they align with the four holes in Ceiling Plate.
- Re-install washer and nut onto end of bolt and tighten down using a 7/16" socket head wrench until secure (per instructions with wall anchor). **WARNING: Tighten nuts so that ceiling plate is firmly attached, but do not over tighten. Over tightening can damage the bolts, greatly reducing their holding strength.**

