

# TRC-1280

## Owner's Manual



*This remote control was Custom Programmed for you by:*

---

*For questions about your Custom Programming call:*

---

*Custom Programming of a complex home theater and/or a multi-room system is one of the most challenging tasks within an audio/video installation. It involves an intimate knowledge of how the components interact and exact details on the proper sequences of control.*

*Only a Total Control dealer has the requisite experience and training to quickly and effectively customize a remote control for true automated operation.*

*Congratulations on your choice!*

*TRC-1280 Owner's Manual © 2012 Universal Remote Control, Inc.*

*The information in this manual is copyright protected. No part of this manual may be copied or reproduced in any form without prior written consent from Universal Remote Control, Inc.*

*UNIVERSAL REMOTE CONTROL, INC. SHALL NOT BE LIABLE FOR OPERATIONAL, TECHNICAL OR EDITORIAL ERRORS/OMISSIONS MADE IN THIS MANUAL.*

*The information in this manual may be subject to change without prior notice.*

*URC - Control the Experience is a registered trademark of Universal Remote Control, Inc.*

*All other brand or product names are trademarks or registered trademarks of their respective companies or organizations.*



500 Mamaroneck Avenue, Harrison, NY 10528  
Phone: (914) 835-4484 Fax: (914) 835-4532

<b>Congratulations!</b>	<b>1</b>
<b>Using the TRC-1280</b>	<b>2</b>
<b>Connecting the Battery Pack</b>	<b>3</b>
<b>Using the Charging Base</b>	<b>3</b>
<b>Two-Way via WiFi</b>	<b>3</b>
<b>Displaying the Settings Screen</b>	<b>4</b>
<b>Sleep Settings</b>	<b>5</b>
<b>Wireless Network Settings</b>	<b>5</b>
<b>Brightness</b>	<b>5</b>
<b>System</b>	<b>5</b>
<b>Button Light</b>	<b>6</b>
<b>Power</b>	<b>6</b>
<b>Calibration</b>	<b>6</b>
<b>Date and Time</b>	<b>6</b>
<b>Sound &amp; Vibration</b>	<b>7</b>
<b>Pickup</b>	<b>7</b>
<b>Factory Default</b>	<b>7</b>
<b>Exit</b>	<b>7</b>
<b>Maintaining Your TRC-1280</b>	<b>8</b>
<b>Specifications</b>	<b>8</b>
<b>USA Limited Warranty Statement</b>	<b>9</b>
<b>Precautions and Information Concerning Rechargeable Lithium Polymer Batteries</b>	<b>10</b>
<b>Federal Communication Commission Interference Statement</b>	<b>11</b>
<b>Regulatory Information to the user</b>	<b>12</b>
<b>Declaration of Conformity</b>	<b>13</b>

## Congratulations!

---

Thank you for purchasing the Total Control TRC-1280 universal remote control. This unit can control every connected device in your home using the Total Control Advanced System Controller. You can also control devices located in different rooms via Wi-Fi. Controlling your home is simple with the TRC-1280 remote.



### **Two-way Instant-Wi-Fi controller with dazzling 2.8" color touch screen interface**

Receive two-way feedback for the rooms and music sources that can be controlled. Turn On/Off music while also viewing the current selections artist name, album and song title.

### **Vibrating Haptic Technology confirms button presses**

The TRC-1280 has an Active Matrix color TFT display with vibrating Haptic feedback technology. When touching of an LCD button, the screen vibrates to confirm the button press.

### **Includes rechargeable Lithium Polymer Batteries and charger base**

The TRC-1280 comes equipped with a Lithium Polymer battery that is rechargeable with the 6V charging base. You no longer need to waste money on disposable batteries or trying to locate misplaced batteries.

### **Requires MRX-10 or compatible URC Advanced System Controller**

In combination with an MRX-10 or compatible URC Advanced System Controller, the TRC-1280 can control your system without being in line-of-sight of the equipment by sending the commands over your home network.

### **Programmable only by URC certified professional programmer on-premises or off-premises via the Internet**

To fully automate your audio/video system, the programmer must have detailed knowledge of each component, LAN configuration, Wi-Fi optimization and how the system is connected and operated. With the ability to connect the TRC-1280 to an MRX-10 or compatible URC Advanced Controller, your installer can program the remote, with your permission, from his office should the need arise. Only a trained and certified professional audio/video installer can install a TRC-1280 remote control in a timely and efficient manner.

## Using the TRC-1280

The TRC-1280's Main Menu pages display the activities and devices in your system. Press the Main page button to see what your choices are. Large systems may have more than one page. Press either of the Page buttons to see further options.

Gently press any screen button with your finger to select an activity or a device. The screen will change to display the buttons you need for that activity/device. The Page buttons may reveal additional buttons for some devices and activities.

When you would like to control another device, press the Main or Page buttons and select a new device from the Main page.

The **Main** button always displays the Main menu pages.

The **Page** buttons display additional pages of controls.

The **Volume** and **Mute** buttons are always available regardless of what screen is displayed.

The **5-way cursor buttons** enables you to both scroll lists of artists, albums or songs from your Music Server on the TRC-1280 touch screen or to navigate TV guides and menus with ease.



## Connecting the Battery Pack

---

Unlock the rear cover by pressing down on the spring lock at the top of the cover. Remove the cover. For shipment from the factory, the battery is left out of the TRC-1280. Place the battery into the battery compartment, making sure you align the contacts on the battery to the contacts on the TRC-1280. The battery will snap into place when aligned properly. Replace the cover and snap it into place.

## Using the Charging Base

---

Plug the 6V DC adapter into a power outlet and into the back of the charging base. Gently place the TRC-1280 into the cradle of the charging base. It automatically aligns itself to the contacts on the charging base. The Status light should immediately light. Red indicates that it is charging. Blue shows that it is fully charged. There is no harm in leaving the TRC-1280 on its charging base whenever it is not in use.



Red indicates charging, Blue that the remote is fully charged.

## Two-Way via Wi-Fi

---

To use the TRC-1280 with any two-way companion product, the TRC-1280 must be configured by your installer to be part of a LAN (local area network) via a Wi-Fi b/g access point or router. This is not user configurable. If you have any questions, consult your custom installer.

## Displaying the Settings Screen

You can enter the Settings menu by pressing and holding the MAIN and OK button for three seconds. Once there, if you do not press any button on the Settings screen, the TRC-1280 will timeout after 60 seconds and return to the previous setting or Main screen. There are two pages of Settings screens. To access the other page, press either of the Page buttons. To select a setting, press the button on the LCD screen. To go back a step or to get out of the settings screen, press the MAIN button.

There are two pages of Settings screen. To access the other page, press either of the Page buttons.

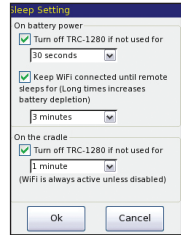


Page buttons reveal the rest of the settings.

Page 2 of the Settings Screen

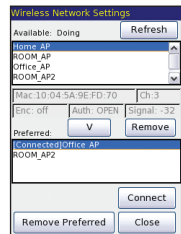
## Sleep Settings

Wi-Fi and backlighting can be separately adjusted to conserve battery life. Note that when the backlight is set to turn off, the remote is not connected to the network. Picking up or waking the TRC-1280 will reconnect it to the Wi-Fi network.



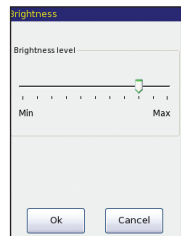
## Wireless Network Settings

**WARNING!** Only use this button when instructed to by Technical Support. The screen displays network information about your TRC-1280 and the wireless network it is connected to. Do not make any changes on this screen!



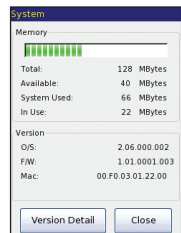
## Brightness

Adjust the screen brightness by moving the slider. Min (minimum) is the dimmest setting and Max (maximum) is the brightest setting.



## System

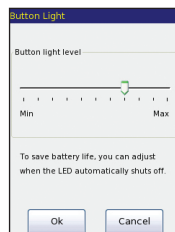
The System Information screen displays data about your TRC-1280's Operating System, Memory etc.





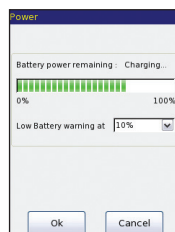
## Button Light

You can adjust the brightness of the LEDs that backlight the buttons of the TRC-1280. Move the slider left to dim the backlighting and move it right to brighten the backlighting.



## Power

You can display the remaining charge by selecting Power. You can also adjust when the Low Battery warning screen will appear.

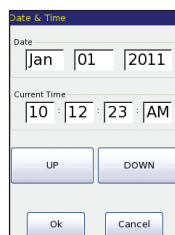


## Calibration

To calibrate button presses, adjust the onscreen “tap” location with a pen top or PDA stylus. Using your fingers to calibrate the screen may result in inconsistent button presses.

## Date and Time

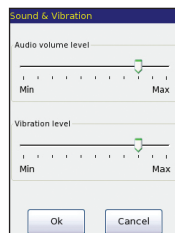
Your TRC-1280 may have been programmed to display the time or date on the touch screen. If you need to, you can adjust the time displayed by changing the settings on this screen.



## Sound & Vibration

---

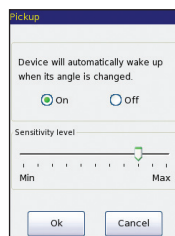
Adjust the volume and vibration levels by touching and dragging the slider to your desired Min/Max levels.



## Pickup

---

You can set your TRC-1280 to only turn on when touched, or every time you move it. Simply select On or Off. Also you can adjust the pickup sensitivity with the slide bar.



## Factory Default

---

**WARNING!** Only use this button when instructed to by Technical Support. It resets the memory of the TRC-1280 to the factory settings. All your programming will be lost!

## Exit

---

When you have finished adjusting Settings, simply tap the Exit button to return to normal operation.

## Maintaining Your TRC-1280

---

Be careful not to scratch the touch screen, only use your finger to tap the LCD touch screen or use a plastic pen top or PDA stylus. Never use a real pen, pencil or any other sharp object on the screen. Keep it away from extreme cold or heat. The TRC-1280 is not waterproof. Do not use it in any location that is damp or wet. If you spill water on it, take out the battery pack and let the TRC-1280 dry for 48 hours before you try powering it up again. If you spill coffee or another beverage on it, clean it with distilled water. Make sure no water gets inside the TRC-1280. The touch screen contains a glass element. Be careful to not drop the TRC-1280 or slam it against anything.

Use a soft, damp cloth to clean the screen. If the screen still shows finger prints, clean it with watered down window-cleaner. Do not use anything abrasive and don't use too much water, some might leak into the interior.

## Specifications

---

**Microprocessor:** 533MHz ARM9

**RAM:** 128Mbyte Mobile DDR

**NAND:** 128Mbyte

**LCD:** 2.8 Inch Screen (240 by 320) LCD Backlighting by LED

**Sound:** Mono 1 watt

**Devices:** Supports up to 255 Devices with text, less with heavy graphics

**usage Pages:** Supports up to 255 Pages on each Device with text, less with heavy graphics usage

**Macro Capability:** Up to 255 steps each, however nesting is allowed

**Wi-Fi:** IEEE 802.11B(11Mbps), G(54Mbps)

**Battery:** Lithium polymer, 2400mAh

**Battery Charging Time:** 5 Hours

**Dimensions:** 8.8" Height x 2.3" Wide x 0.9" Thick

**Battery Warranty:** 1 Year

**Weight (without AC Adapter):** 7.8 oz

## USA Limited Warranty Statement

---

Your Universal Remote Control, when delivered to you in new condition, is warranted against defects in materials or workmanship as follows:

**UNIVERSAL REMOTE CONTROL, INC.** warrants this product against defects in material or workmanship for a period of one (1) year and as set forth below. Universal Remote Control will, at its sole option, repair the product using new or comparable rebuilt parts, or exchange the product for a comparable new or rebuilt product. **In the event of a defect, these are your exclusive remedies.**

This Limited Warranty covers only the hardware components packaged with the Product. It does not cover technical assistance for hardware or software usage and it does not cover any software products whether or not contained in the Product; any such software is provided "AS IS" unless expressly provided for in any enclosed software Limited Warranty.

To obtain warranty service, you must deliver the product, freight prepaid, in its original packaging or packaging affording adequate protection to Universal Remote Control at the address provided in the Owner's Manual.

**It is your responsibility to backup any macro programming, artwork, software or other materials that may have been programmed into your unit. It is likely that such data, software, or other materials will be lost during service and Universal Remote Control will not be responsible for any such damage or loss.** A dated purchase receipt, Bill of Sale, Installation Contract or other verifiable Proof of Purchase is required. For product support and other important information visit Universal Remote Control's website: <http://www.UniversalRemote.com> or call the Customer Service Center (914) 835-4484.

This Limited Warranty only covers product issues caused by defects in material or workmanship during ordinary consumer use. It does not cover product issues caused by any other reason, including but not limited to product issues due to commercial use, acts of God, third-party installation, misuse, limitations of technology, or modification of or to any part of the Universal Remote Control product. This Limited Warranty does not cover Universal Remote Control products sold as USED, AS IS, REFURBISHED, so-called "B STOCK" or consumables (such as batteries). This Limited Warranty is invalid if the factory-applied serial number has been altered or removed from the product. This Limited Warranty is valid only in the United States of America. **This Limited Warranty specifically excludes products sold by unauthorized resellers.**

## LIMITATION OF REMEDIES

UNIVERSAL REMOTE CONTROL SHALL NOT BE LIABLE FOR ANY INCIDENTAL OR CONSEQUENTIAL DAMAGES FOR BREACH OF ANY EXPRESS OR IMPLIED WARRANTY OR CONDITION ON THIS PRODUCT. IN NO EVENT SHALL UNIVERSAL REMOTE CONTROL BE LIABLE, WHETHER IN CONTRACT OR IN TORT (INCLUDING NEGLIGENCE) FOR DAMAGES IN EXCESS OF THE PURCHASE PRICE OF THE PRODUCT, ACCESSORY OR SOFTWARE, OR FOR ANY INDIRECT, INCIDENTAL, SPECIAL OR CONSEQUENTIAL DAMAGES OF ANY KIND, OR LOSS OF REVENUE OR PROFITS, LOSS OF BUSINESS, LOSS OF INFORMATION OR DATA, SOFTWARE OR APPLICATIONS OR OTHER FINANCIAL LOSS ARISING OUT OF OR IN CONNECTION WITH THE ABILITY OR INABILITY TO USE THE PRODUCTS, ACCESSORIES OR SOFTWARE TO THE FULL EXTENT THESE DAMAGES MAY BE DISCLAIMED BY LAW.

EXCEPT TO THE EXTENT PROHIBITED BY APPLICABLE LAW, THERE IS NO OTHER WARRANTY EXPRESSED OR IMPLIED. UNIVERSAL REMOTE CONTROL WILL NOT BE HELD RESPONSIBLE FOR STATEMENTS MADE BY OTHERS CONCERNING THE MERCHANTABILITY OR FITNESS FOR A PARTICULAR PURPOSE ON THIS PRODUCT. Some states or jurisdictions do not allow the exclusion or limitation of incidental or consequential damages, or allow limitations on how long an implied warranty lasts, so the above limitations or exclusions may not apply to you. This Limited Warranty gives you specific legal rights and you may have other rights which vary from state to state or jurisdiction to jurisdiction.

REV020708

## Precautions and Information Concerning Rechargeable Lithium Polymer Batteries

---

- ◆ If you will not be using your remote control for an extended period of time, be sure to remove the battery
- ◆ Do not attempt to disassemble, alter or apply heat to the battery.
- ◆ Use care to avoid dropping the battery or subjecting it to severe impact that could damage the case.
- ◆ The battery should not be immersed in water.
- ◆ Lithium Polymer Batteries are recyclable. For the address of a recycle drop-off location near you call toll free 1-800-822-8837 or visit <http://www.rbc.com>

## Federal Communication Commission Interference Statement

---

This equipment has been tested and found to comply with the limits for a Class B digital device, pursuant to part 15 of the FCC Rules. These limits are designed to provide reasonable protection against harmful interference in a residential installation. This equipment generates, uses and can radiate radio frequency energy and, if not installed and used in accordance with the instructions, may cause harmful interference to radio communications. However, there is no guarantee that interference will not occur in a particular installation. If this equipment does cause harmful interference to radio or television reception, which can be determined by turning the equipment off and on, the user is encouraged to try to correct the interference by one more of the following measures:

- ◆ Reorient or relocate the receiving antenna.
- ◆ Increase the separation between the equipment and receiver.
- ◆ Connect the equipment into an outlet on a circuit different from that to which the receiver is connected.
- ◆ Consult the dealer or an experienced radio/TV technician for help.

### **Warning!**

Changes or modifications not expressly approved by the manufacturer could void the user's authority to operate the equipment.

Note : The manufacturer is not responsible for any Radio or TV interference caused by unauthorized modifications to this equipment. Such modifications could void the user's authority to operate the equipment.

### **FCC Caution**

This device complies with Part 15 of the FCC Rules. Operation is subject to the following two conditions: (1) this device may not cause harmful interference, and (2) this device must accept any interference received, including interference that may cause undesired operation.

Any changes or modifications not expressly approved by the party responsible for compliance could void the authority to operate equipment.

The antenna(s) used for this transmitter must not be co-located or operating in conjunction with any other antenna or transmitter.

### **Federal Communication Commission (FCC) Radiation Exposure Statement**

This remote device is approved as a hand-held and hand-operated only portable (relative to hand) device which is normally operated at 20 cm from a person's body.

## Regulatory Information to the user

### ■ CE conformity Notice

Products with “CE” marking comply with the R&TTE Directive 1995/5/EC, EMC Directive 2004/108/EC and Low Voltage Directive 2006/95/EEC issued by the commission of the European Community.

#### 1) R&TTE Directive

- Safety : EN 60950-1
- EMC : ETSI EN 301 489-1,3, 17
- RF : ETSI EN 300 220-1,2  
: ETSI EN 300 328

#### 2) EMC Directive

- Emission : EN 55022
- Immunity : EN 55024
- Power : EN-61000-3-2, 3

#### 3) Low Voltage Directive

- Product safety : EN 60950-1


### ■ Safety instruction for charging internal rechargeable battery of remote control Caution

Use only with EN60950-1 approved as Limited power source and double insulation(□) marked power adaptor & same ratings described on the product label (6Vdc, 2.0A).

### ■ Declaration of Conformity

“Hereby, Universal Remote Control Inc. declares that this TRC-1280 is in compliance with the Essential requirements and other relevant provisions of Directive 1999/5/EC.”



Certification	CE 0197
Type No.(Model No.)	TRC-1280
Batch/Serial No.	-
Power Rating	6.0V  , 2.0A
Frequency band	WiFi: IEEE 802.11B(11Mbps), G(54Mbps)

# Declaration of Conformity

Company Name : Universal Remote Control Inc.  
 Company Address : 500 Mamaroneck Avenue, Harrison, NY 10528, U.S.A  
[www.universalsremote.com](http://www.universalsremote.com)  
 Contact Information : Phone: (914)835-4484 Fax: (914)835-4532  
 Brand Name : UNIVERSAL remote control  
 Product Name : RF Remote Controller  
 Model Name : TRC-1280

This product herewith complies with the requirements of EMC Directive (2004/108/EC) and R&TTE Directive(1995/5/EC) issued by the Commission of the European Community

Compliance with these directives implies conformity to the following European Community

- EMC Directive
  - EN 55022
  - EN 55024
  - EN 61000-3-2
  - EN 61000-3-3
- R&TTE Directive
  - EN 60950-1
  - ETSI EN 301-489-1,3,17
  - ETSI EN 300 220-1,2
  - ETSI EN 300 328-

List of test reports and/or certificate verified compliance with the standards above

- EMC Directive
  - Report No.
  - Testing Laboratory : Gumi College EMC Center
- R&TTE Directive
  - Certificate No.
  - Certificate Body : TUV Rheinland (No. 0197)

Date of issue : May 30, 2010

Name and signature of authorized person : James Novak  
 Senior Product Manager  
 Universal Remote Control Inc.











500 Mamaroneck Avenue, Harrison, NY 10528

Phone: (914) 835-4484 Fax: (914) 835-4532

[www.universalremote.com](http://www.universalremote.com)



OCE-0073C Rev 02