



Large Venue | Business
Education | Home Entertainment

Glossary



24/7 Operation

Designed and manufactured for heavy duty applications and capable of 24/7 operation.



360° Projection

Thanks to solid state illumination, the projectors can be installed with no limitation on projection angle.



3D

3D projectors support 3D content via HDMI from a compatible device, such as Blu-ray player, to be shown with active 3D glasses.



3D Technology Ready

Featuring DLP® 3D-ready and DLP Link technologies the 3D ready projector enables the viewing of 3D content when wearing 3D glasses.



3G-SDI

3G-SDI is the third generation serial digital interface of transmitting uncompressed, unencrypted high-definition digital video signals up to 330 yards.



Anti Dust

The projector is designed for anti-dust with its sealed optical engine making it robust for heavy duty usage.



Audio

The integrated audio speakers do not require a separate sound system.



Auto Power Off

The projectors are design to be automatically turned off when there is no signal input for a certain period of time.



Bluetooth

Bluetooth function enables the projector audio to be paired to external audio equipment, such as speakers or headphones, to enhance listening experience.



Brightness

Projector brightness is measured in ANSI lumens.



BrilliantColor™

With Texas Instruments BrilliantColor technology, Vivitek's projectors produce vibrant images on the screen. It not only improves color accuracy, but brightens secondary colors as well, for true-to-life images.



Centered Lens Design

A centered lens design eliminates the need for any special planning and installation considerations.



DICOM

Built-in DICOM Simulation Mode*, which makes it ideal for viewing grayscale medical images – such as X-rays – for medical training sessions and healthcare seminars.



Display Port

DisplayPort is a digital display interface developed by the Video Electronics Standards Association (VESA). The interface is primarily used to connect a video source to a display device such as a computer monitor, though it can also be used to carry audio, USB, and other forms of data.



DLP

Using Texas Instruments DLP technology with BrilliantColor™ features, Vivitek image quality will not suffer over time. Vivitek projectors are built either filter-free or with long filter cleaning intervals.



Dual-Lamp

To create a brighter image, dual lamp switching technology is used in a selection of Vivitek projectors. For added benefit, the projector will automatically switch to single operation mode in case one lamp is down.



Edge Blending

The projector images can be seamlessly combined into one large and stunning image. With internal edge blending, there is no need for an edge blending box or camera. All setup is conducted via the projector's OSD and remote control.



Education

Projector belongs to the education product portfolio and is backed with the 5-year education warranty program.



Free Wall Mount

Wall mount bracket free of charge upon request for Ultra Short Throw projectors.



HDBaseT

HDBaseT protocol allows for HD video quality and digital audio content to be transmitted over standard Ethernet cable up to 110 yards away from the source.



HDMI

HDMI is an uncompressed, all-digital audio/video interface that supports audio/video sources such as a set-top box, DVD player, A/V receiver, and video monitors such as a digital projector or digital television (DTV). HDMI is backward compatible with DVI specification and supports HDCP.



Image Warping

Warping functionality allows for projection on non-flat surfaces such as curved screens or columns without external hardware or software to control the geometrical shape of the image.



Instant On/Off

The projects are designed for quick start-up and shutdown times.



Interactive Pen

The projector supports two interactive pens which can be used for note-taking, highlighting and making on screen corrections.



Interactivity

Interactive projectors with finger-touch capacity allow active participation with the projected content, either through the use of an electronic pen or finger touch for note-taking, highlighting and making on screen corrections.



Interchangeable lenses

Lenses are available with different optical specification to meet a variety of projection needs.



Laser Light Source

Laser light source is a new solid state illumination for the projectors. It provides a consistent brightness level and color performance thanks to its long-lasting operation up to 20,000 hours.



LED

Light Emitting Diode. A light generating technology that uses a semiconductor diode that emits monochromatic (single-color) light when charged.



Lens Position Memory (LPM)

The Lens Positioning Memory (LPM) feature allows for storing up to 10 user-defined lens positions for focus, zoom and lens shift.



Lens Shift

Vertical and horizontal lens shift adjustments allow for easier alignment on the screen without moving the projector and provides professional installers with greater flexibility.



Long Life Lamp

With up to 10,000 hours of lamp life, the long life lamps save time and money on projector maintenance. The lamp lifespan has been greatly improved, so there is no more need for constant lamp and filter replacement.



MHL

Mobile High-Definition Link (MHL) allows your compatible smartphone or tablet to mirror content to projectors or TVs via the MHL cable.



Network Management

Network ready for integration and system administration via the RJ45 interface. This allows the network administrator to monitor the status of the projectors installed on the network and remotely access the projector's functions and settings.



PC-Free

Content can also be displayed directly from a USB flash drive to effortlessly display documents, photos, and movies without the need to connect to a computer or Blu-ray player.



PIP (Picture in Picture)

This function allows you to split the screen for displaying the images from two input sources.



Resolution

Native Resolution is the number of pixels that make up an image. It is measured as width by height.



Screen Mirroring

Screen mirroring function allows you to mirror your mobile device screen to the big projection image via app support.



VividMotion

VividMotion frame interpolation function is designed to reduce motion judder to create a fluid and flawless video stream, providing a finely detailed viewing experience when fast-paced movie scenes or sports games are being enjoyed.



Wi-Fi

Optional or built-in wireless connection allows end user to display content from their computer or mobile devices to the projector via software or app.

Warranty

Entry

2-Year warranty on Projector,
1 Yr or 1,000 hrs on Lamp

Standard

3-Year warranty on Projector,
1 Yr or 1,000 hrs on Lamp

Large Venue

5-Year warranty on Projector,
1 Yr or 1,000 hrs on Lamp

Large Venue Laser Phosphor

5-Year warranty on Projector, 3 Yr or 10,000 hrs
on the Laser Phosphor illumination source

Education

5-Year warranty on Projector,
3 Yr or 2,000 hrs on Lamp

Qumi Entry Warranty

2-Year warranty on Projector
and Light Source

Qumi Standard Warranty

3-Year warranty on Projector
and Light Source

Visual Display and Presentation

Products from Vivitek



Take a look at our **latest products** for **large venue, business, education, and home cinema**

Vivitek, a brand of Delta, brings **smart and energy-efficient solutions** to **offices** and homes to improve your experience of sharing content on the big screen.

We want you to enjoy our projectors on many levels, so we take great care in details, giving our products **modern design, implementing new technological solutions** and **user-friendly navigation**.

Large Venue

Professional Projectors That Are Easy to Handle

Vivitek has created a line of professional projectors intended for high-end installation. The Large Venue series offers a wide choice of projectors, ranging from 5,000 to 18,000 ANSI Lumens either from a UHP lamp or laser phosphor source.



Features

The projectors are designed with the AV installer in mind (features vary by platform):

- Interchangeable lens
- Motorized lens shift, zoom and focus
- User changeable color wheels
- Minimal maintenance required
- High reliability for 24/7 usage

Technologies

At Vivitek, one of our top priorities is to follow the latest technological developments and deliver innovative solutions in our high-performance Large Venue projectors.

Laser

Laser projectors are capable of maintaining brightness and color consistency over a long period of use. Flexible in use with high brightness and low total cost of ownership, laser projectors have quickly become the optimal projection choice for a diverse range of applications.

Laser Light Source Benefits

- Constant brightness level and color performance
- Long lasting – up to 20,000 hours of operation time
- No lamp changes and thus minimized maintenance
- High reliability enabling 24/7 use
- Installation flexibility in almost every angle



Laser - How It Works?

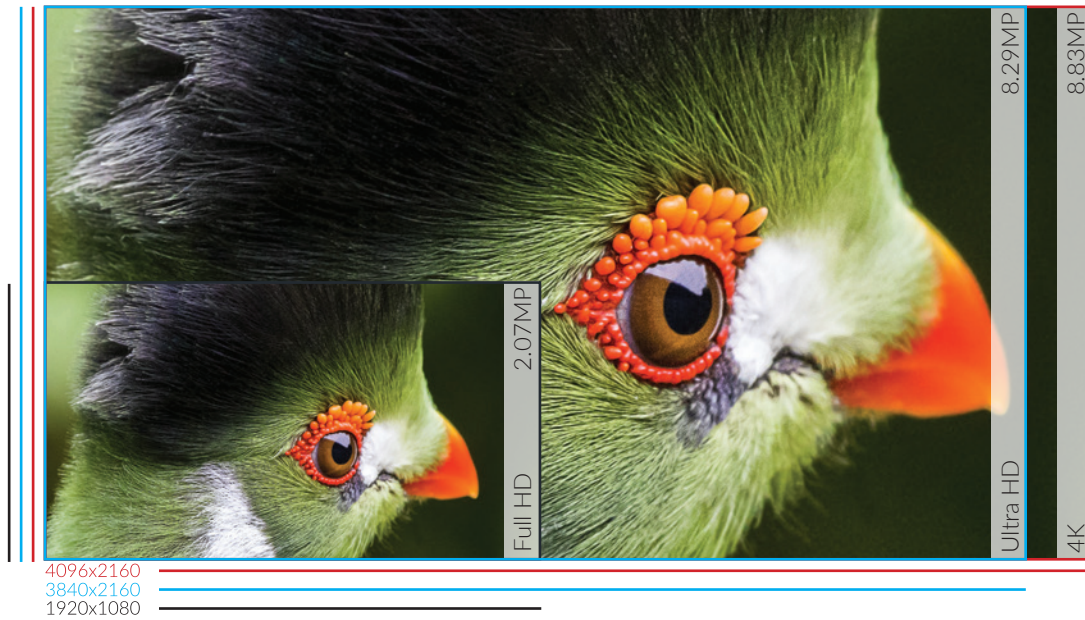
To generate a full spectrum of color, the three primary colors have to be created from a single color laser – in this case, a blue laser. This is achieved by using a cluster of blue lasers that shine onto a spinning yellow phosphor wheel that incorporates a clear segment that allows the blue light from the lasers to shine through (this is the blue primary color).

The generated yellow light then passes through a color wheel that in turn generates red and green – the other primary colors. After passing through a diffusion window, the colored light is presented to the Digital Micro Mirror (DMD) chip, the imaging device.

The DMD switches at a very high rate and presents colored pixels to the optical lens system for display on the screen or projected surface. A simple, precise technology that is efficient and generates sharp and clearly defined images, as only a single chip is required.

4K Resolution for Every Detail

With more than four times the resolution of Full HD, 4K resolution-based projectors offer massive picture clarity and show images with a degree of details never experienced before.



Extra Pixels Matter

See details you would normally miss.



Edge Blending

We have equipped selected Vivitek projectors with built-in edge blending. This feature allows several projector images to be seamlessly combined into one large projection. With built-in edge blending, there is no need for additional external edge blending hardware. All setup is conducted via the projector's OSD and remote control. The images can be blended as a "Strip," "Stack" or "Grid."

For different products and installation requirements, Vivitek offers ViviBlending – integrated hardware and edge blending software.

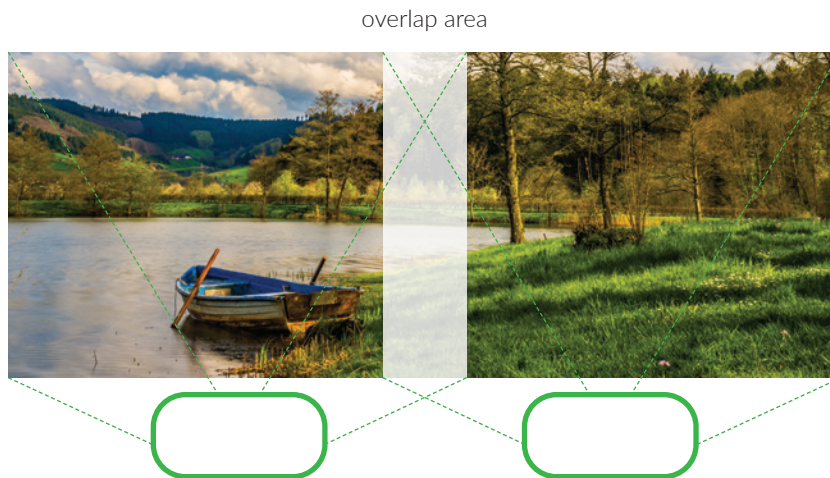


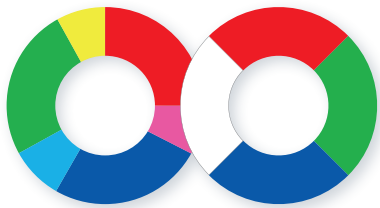
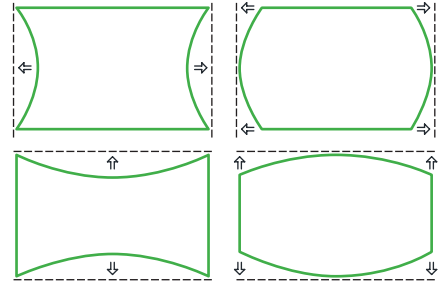
Image 1: The brighter overlapping area will be adjusted and blended using the projector's embedded blend control feature.



Image 2: Both of the projected images are seamlessly blended, creating one, impressive large format picture.

Image Geometric Correction

This function allows for the projection on to non-flat surfaces – such as curved screens or columns – without the need to use additional external hardware or software. The image adjustment is done through the projector's On-Screen Display (OSD) menu or through remote commands over the RS232 or TCP/IP networks.

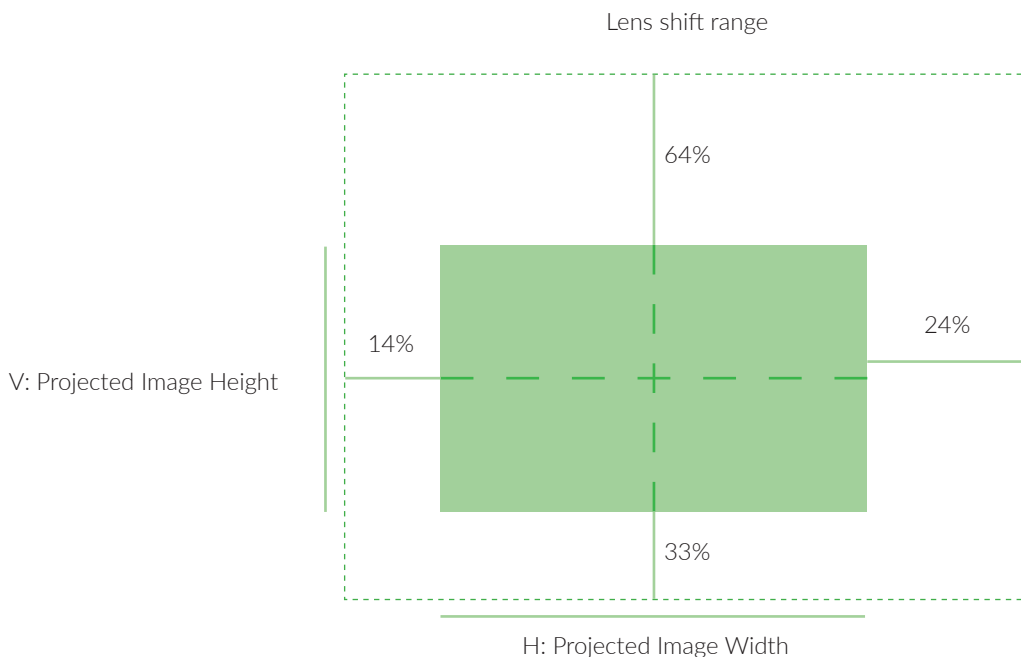


Exchangeable Color Wheels

Vivitek offers projectors with either six or four segment color wheels. Additionally, selected models have dual color wheels simultaneously.

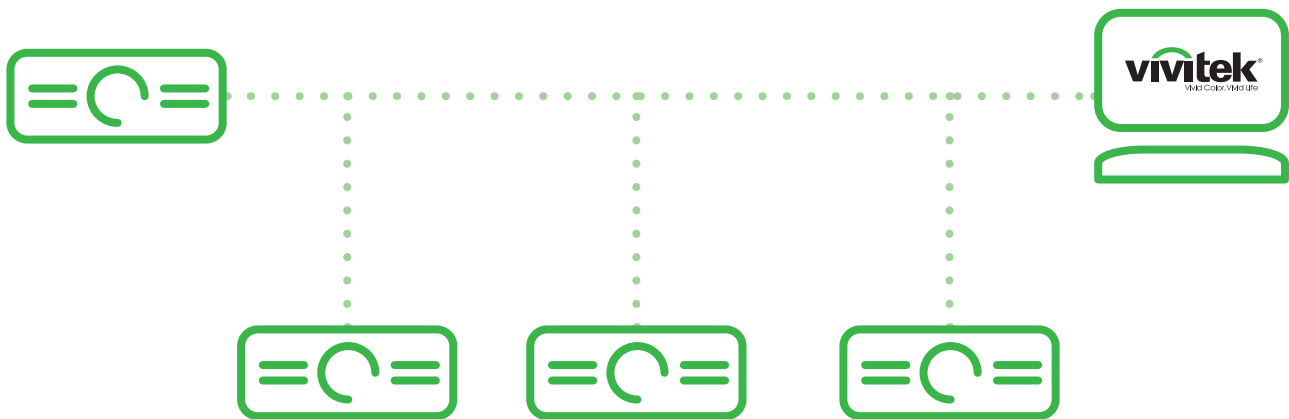
Lens Shift

Vertical and horizontal lens shift adjustment allows for easier alignment on the screen without moving the projector and provides professional installers with greater flexibility. A number of Vivitek's large venue projectors have motorized zoom, focus and lens shift, allowing adjustment even when the projector is mounted in an area difficult to reach.



Network Management

Let the network administrator remotely manage and support all the projectors in a facility: monitor the status, lamp life, alerts, access functions and other vital settings. This is possible thanks to the RJ45 network and Vivitek Projector Control Tool software or other compatible solutions e.g. Crestron® RoomView™, allowing the Vivitek Large Venue projectors to easily integrate into an existing IT network infrastructure.



Large Venue Warranty

At Vivitek, we are committed to delivering high quality and reliable products that will meet a broad range of requirements and bring satisfaction and enjoyment that is expected. Vivitek treats this commitment very seriously by providing a 5-year warranty on projectors, and a 1-year warranty or 1,000 hours on lamps (whichever comes first) for all large venue models.

Laser Series

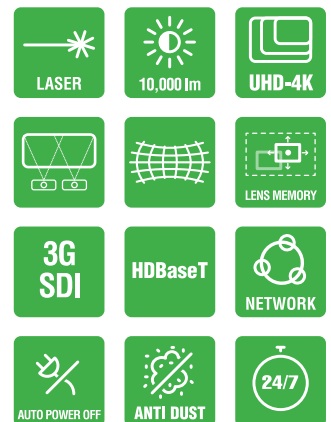
High brightness and low maintenance

- Full range of resolutions up to 4K UHD
- Brightness from 5,000 to 18,000 ANSI Lumens
- Contrast ratio up to 15,000:1
- Laser light source up to 20,000 hours operation



Laser projectors are the optimal choice for a diverse range of large venue applications

- Designed for heavy duty 24/7 operations, the laser phosphor optical engine offers up to 20,000 hours life time.
- The laser series offers models (varies by model) with built-in edge-blending and warping
- Landscape mode, portrait mode, and 360 degrees projection support.
- Easy installation guaranteed by lens focus, zoom, and horizontal and vertical adjustments
- Lens Position Memory (LPM), for focus, zoom, and lens shift (varies by platform)
- HDBaseT for robustness of long digital signal transmission up to 330' (100 m)





DX4630Z

DW4650Z

DH4661Z

DU4671Z

	DX4630Z	DW4650Z	DH4661Z	DU4671Z	
Technology	Display Type	Single 0.55" DLP Technology by Texas Instruments	Single 0.65" DLP Technology by Texas Instruments	Single 0.65" DLP Technology by Texas Instruments	Single 0.67" DLP Technology by Texas Instruments
	Brightness	5,000 ANSI Lumens	5,500 ANSI Lumens	5,000 ANSI Lumens	5,500 ANSI Lumens
Image	Native Resolution	XGA (1024 x 768)	WXGA (1280 x 800)	1080p (1920 x 1080)	WUXGA (1920 x 1200)
	Max. Supported Resolution	WUXGA (1920 x 1200)	WUXGA (1920 x 1200)	WUXGA (1920 x 1200)	WUXGA (1920 x 1200)
	Native Aspect Ratio	4:3	16:10	16:9	16:10
	Contrast Ratio	20,000:1	20,000:1	20,000:1	20,000:1
	Keystone Correction	V: +/- 30°, H: +/-25°	V: +/- 30°, H: +/-25°	V: +/- 30°, H: +/-25°	V: +/- 30°, H: +/-25°
	Zoom Ratio	1.65x	1.65x	1.65x	1.65x
Optical	Offset	See Lens Shift	See Lens Shift	See Lens Shift	See Lens Shift
	Lens Shift Range	V: +15%, H: 7%	V: +15%, H: 7%	V: +15%, H: 7%	V: +15%, H: 7%
	Throw Ratio	1.51-2.5:1	1.21-2.0:1	1.15-1.9:1	1.15-1.9:1
	Image Size	50"-208"	59"-245"	60"-250"	62"-257"
	Throw Ratio	1.51-2.5:1	1.21-2.0:1	1.15-1.9:1	1.15-1.9:1
	Projection Lens	f/2.45-3.13, f=17.23-27.9mm	f/2.45-3.13, f=17.23-27.9mm	f/2.45-3.13, f=17.23-27.9mm	f/2.45-3.13, f=17.23-27.9mm
Connectivity	I/O Connection Ports	VGA-in, HDMI v.1.4 (3x), MHL (1x), Composite Video, Audio-in (Mini-Jack), Audio-in (RCA), VGA-out, Audio-out (Mini-Jack), Audio-out (RCA), 3D Sync-out, USB Type A (Power only), RJ45 (LAN), RS232, USB mini-B (service)	VGA-in, HDMI v.1.4 (3x), MHL (1x), Composite Video, Audio-in (Mini-Jack), Audio-in (RCA), VGA-out, Audio-out (Mini-Jack), Audio-out (RCA), 3D Sync-out, USB Type A (Power only), RJ45 (LAN), RS232, USB mini-B (service)	VGA-in, HDMI v.1.4 (3x), MHL (1x), Composite Video, Audio-in (Mini-Jack), Audio-in (RCA), VGA-out, Audio-out (Mini-Jack), Audio-out (RCA), 3D Sync-out, USB Type A (Power only), RJ45 (HDBaseT), RS232, USB mini-B (service)	VGA-in, HDMI v.1.4 (3x), MHL (1x), Composite Video, Audio-in (Mini-Jack), Audio-in (RCA), VGA-out, Audio-out (Mini-Jack), Audio-out (RCA), 3D Sync-out, USB Type A (Power only), RJ45 (HDBaseT), RS232, USB mini-B (service)
	Dimensions (W x D x H)	13.8" x 17.7" x 5.9" (350 x 450 x 151 mm)	13.8" x 17.7" x 5.9" (351 x 450 x 151 mm)	13.8" x 17.7" x 5.9" (352 x 450 x 151 mm)	13.9" x 17.7" x 5.9" (353 x 450 x 151 mm)
General	Weight	23.6 lbs (10.7 kg)	23.6 lbs (10.7 kg)	23.6 lbs (10.7 kg)	23.6 lbs (10.7 kg)
	Speakers	10W	10W	10W	10W
	Noise Level	36 dB / 33 dB (Normal / Eco)	36 dB / 33 dB (Normal / Eco)	36 dB / 33 dB (Normal / Eco)	36 dB / 33 dB (Normal / Eco)
	Illumination Life and Type	Lamp free design. Laser light source lasting up to 20,000 hours	Lamp free design. Laser light source lasting up to 20,000 hours	Lamp free design. Laser light source lasting up to 20,000 hours	Lamp free design. Laser light source lasting up to 20,000 hours
	Power	Supply AC: 100-240V, 50/60Hz, Consumption: 430W (Eco mode 350W), <0.5W Standby	Supply AC: 100-240V, 50/60Hz Consumption: 430W (Eco mode 350W), <0.5W Standby	Supply AC: 100-240V, 50/60Hz Consumption: 430W (Eco mode 350W), <0.5W Standby	Supply AC: 100-240V, 50/60Hz Consumption: 430W (Eco mode 350W), <0.5W Standby
	Available Colors	Black and White	Black and White	Black and White	Black and White



DU7095Z



DU7097Z



DU6690Z

	DU7095Z	DU7097Z	DU6690Z	
Technology	Display Type	Single 0.67" DLP Technology by Texas Instruments	Single 0.67" DLP Technology by Texas Instruments	Single 0.67" DLP Technology by Texas Instruments
	Brightness	6,500 ANSI Lumens	7,000 ANSI Lumens	6,500 ANSI Lumens
Image	Native Resolution	WUXGA (1920 x 1200)	WUXGA (1920 x 1200)	WUXGA (1920 x 1200)
	Max. Supported Resolution	WUXGA (1920 x 1200) @60Hz	WUXGA (1920 x 1200)	WUXGA (1920 x 1200)
	Native Aspect Ratio	16:10	16:10	16:10
	Contrast Ratio	15,000:1	15,000:1	10,000:1
	Keystone Correction	V: +/-30°; H: +/-25°	V: +/- 30°, H: +/-25°	V: +/- 30°, H: +/-25°
	Zoom Ratio	Manual Zoom & Focus	Manual Zoom & Focus	Motorized Zoom & Focus
Optical	Offset	Manual Lens Shift	See Lens Shift	See Lens Shift
	Lens Shift Range	V: +55%, -15%; H: +/-5%	V: -15%, +55%, H: +/-5%	V: +64%, -33%, H: +24%, -14%
	Image Size	dep. optional lens	dep. optional lens	dep. optional lens
	Projection Distance	dep. optional lens	dep. optional lens	dep. optional lens
	Projection Lens	5 optional lenses from 0.77:1 to 3.00-5.00:1	dep. optional lens 7 optional lenses from 0.77:1 to 4.00-5.00:1 throw ratio range	dep. optional lens 8 optional lenses from 0.38:1 to 5.31-8.26L1 throw ratio range
Connectivity	I/O Connection Ports	VGA-In, HDMI v1.4 (x2: HDMI/MHLx1, HDMIx1), DVI-D, RJ45 (HDBaseT), Component (5 BNC - RGBHV), Composite Video, Audio-In (Mini-Jack), Audio-In (RCA), VGA-Out, Audio-Out (RCA), Wired Remote Jack (x2: In and Out), 3D-Sync In, 3D-Sync Out, 12v Trigger (3.5mm Mini-Jack), USB A (Power Only), RJ45 (LAN), RS232 (x2: In and Out), USB B (Service)	VGA-in, HDMI v.1.4 (2x), DVI-D, Component (5 BNC - RGBHV), Composite Video, S-Video, Audio-in (Mini-Jack), Audio-in (RCA), VGA-out, Audio-out (Mini-Jack), Audio-out (RCA), 3D Sync-In, 3D Sync-out, USB Type A (Power only), RJ45 (HDBaseT), RJ45 (LAN), RS232, USB Type B (service)	VGA-in, HDMI v.1.4 (2x), DVI-D, Component (5 BNC - RGBHV), VGA-out, RJ45 (HDBaseT), RS232, Wired Remote, 12V Trigger, USB mini-B (service)
General	Dimensions (W x D x H)	18.5" x 20.3" x 8" (470x 517 x 202 mm)	18.5" x 20.3" x 8" (470 x 517 x 202 mm)	19.7" x 22.8" x 8.1" (500 x 580 x 205 mm)
	Weight	55.1 lbs (25 kg)	55.1 lbs (25 kg)	55.1 lbs (25 kg)
	Speakers	20W	20W	N/A
	Noise Level	33dB / 30dB (Normal / Eco. Mode)	33 dB / 30 dB (Normal / Eco mode)	37 dB
	Illumination Life and Type	Lamp free design, Laser light source lasting up to 20,000 hours	Lamp free design, Laser light source lasting up to 20,000 hours	Lamp free design, Laser light source lasting up to 20,000 hours
	Power	Supply: AC 100-240V, 50/60Hz. Consumption: 530W (Eco. Mode), 650W (Normal Mode), <0.5W (Standby)	Supply AC: 100-240V, 50/60Hz Consumption: 650W (Eco mode 530W), <0.5W Standby"	Supply AC: 100-240V, 50/60Hz Consumption: 700W (Eco mode 580W), <0.5W Standby
	Available Colors	Black and White	Black and White	Black and White



	DU8090Z	DU8190Z	DK8500Z	DU9800Z	
Technology	Display Type	Single 0.67" DLP Technology by Texas Instruments	Single 0.67" DLP Technology by Texas Instruments	Single 0.66" DLP Technology by Texas Instruments	Single 0.67" DLP Technology by Texas Instruments
	Brightness	8,000 ANSI Lumens	10,000 ANSI Lumens	7,500 ANSI Lumens	18,000 ANSI Lumens
	Native Resolution	WUXGA (1920 x 1200)	WUXGA (1920 x 1200)	UHD (3840 x 2160)	WUXGA (1920 x 1200)
	Max. Supported Resolution	WUXGA (1920 x 1200) @60Hz	WUXGA (1920 x 1200) @60Hz	UHD (3840 x 2160) @60Hz	WUXGA (1920 x 1200)
	Native Aspect Ratio	16:10	16:10	16:9	16:10
	Contrast Ratio	10,000:1	10,000:1	10,000:1	10,000:1
	Keystone Correction	V: +/-40°; H: +/-60°	V: +/-40°; H: +/-60°	V: +/-40°; H: +/-60°	V: +/- 40°, H: +/-60°
Optical	Zoom Ratio	Motorized Zoom & Focus	Motorized Zoom & Focus	Motorized Zoom & Focus	Opt. Motorized Lens
	Offset	Motorized Lens Shift	Motorized Lens Shift	Motorized Lens Shift	See Lens Shift
	Lens Shift Range	V: +64%, -33%; H: +24%, -14%	V: +64%, -33%; H: +24%, -14%	V: +64%, -33%; H: +24%, -14%	V: +/-50%, H: +/-15%
	Image Size	dep. optional lens	dep. optional lens	dep. optional lens	dep. optional lens
	Projection Distance	dep. optional lens	dep. optional lens	dep. optional lens	dep. optional lens
	Projection Lens	8 optional lenses from 0.38:1 to 5.31-8.26:1 throw ratio range	8 optional lenses from 0.38:1 to 5.31-8.26:1 throw ratio range	8 optional lenses from 0.38:1 to 5.31-8.26:1 throw ratio range	dep. optional lens 6 optional lenses from 0.84:1 to 4.00-7.00:1 throw ratio range
	I/O Connection Ports	VGA-In, HDMI v1.4 (x2), DVI-D, RJ45 (HDBaseT/LAN), 3G-SDI In, 3G-SDI Out, Component (5 BNC - RGBHV), VGA-Out (15pin D-Sub), Wired Remote Jack, 3D-Sync In, 3D-Sync Out, 12v Trigger (3.5mm Mini-Jack), RS232	VGA-In, HDMI v1.4 (x2), DVI-D, RJ45 (HDBaseT/LAN), 3G-SDI In, 3G-SDI Out, Component (5 BNC - RGBHV), VGA-Out (15pin D-Sub), Wired Remote Jack, 3D-Sync In, 3D-Sync Out, 12v Trigger (3.5mm Mini-Jack), RS232	HDMI v2.0 (x4), Display Port, RJ45 (HDBaseT), 3G-SDI In, 3G-SDI Out, Wired Remote Jack, 3D-Sync IR, 3D-Sync In, 12v Trigger (3.5mm Mini-Jack x2), RJ45 (LAN), RS232	VGA-in, HDMI v.1.4 (2x), DVI-D, 3G-SDI-In, Component (5 BNC - RGBHV), VGA-out, 3G-SDI-out, 3D-sync (-in/-out), RJ45 (HDBaseT), RS232, Wired Remote, 12V Trigger
General	Dimensions (W x D x H)	19.7" x 22.8" x 8.1" (500 x 580 x 205 mm)	19.7" x 22.8" x 8.1" (500 x 580 x 205 mm)	19.7" x 22.8" x 8.1" (500 x 580 x 205 mm)	26.8" x 20.9" x 9.8" (681 x 530 x 248 mm)
	Weight	61.7 lbs (28 kg)	61.7 lbs (28 kg)	61.7 lbs (28 kg)	61.7 lbs (28 kg)
	Speakers	N/A	N/A	N/A	N/A
	Noise Level	40dB (Normal Mode)	40dB (Normal Mode)	40dB (Normal Mode)	43dB
	Illumination Life and Type	Lamp free design. Laser light source lasting up to 20,000 hours	Lamp free design. Laser light source lasting up to 20,000 hours	Lamp free design. Laser light source lasting up to 20,000 hours	Lamp free design, Laser light source lasting up to 20,000 hours
	Power	Supply: AC 100-240V, 50/60Hz. Consumption: 675W (Eco. Mode). 850W (Normal Mode). <0.5W (Standby)	Supply: AC 100-240V, 50/60Hz. Consumption: <0.5W (Standby)	Supply: AC 100-240V, 50/60Hz Consumption: <0.5W (Standby)	Supply AC: 100-240V, 50/60Hz Consumption: 1900W, <0.5W Standby
	Available Colors	Black and White	Black and White	Black and White	Black Only

Dual Lamp Series

Large venue presentation solution for demanding multimedia applications



- Full range of resolutions up to WUXGA
- High brightness: up to 12,000 ANSI Lumens
- Contrast ratio up to 5,000:1
- Lamp life up to 3,500 hours



The dual lamps support heavy duty 24/7 operations

The projectors are designed with the AV installer in mind and feature:
(features vary by platform)

- The dual-lamp switching technology ensures minimum downtime ensuring that if one lamp should go down, the projector will continue to operate by automatically switching to single lamp operation mode
- Interchangeable lens with motorized focus and lens shift, and exchangeable color wheels fit to various installation scenarios
- Exceptional content display thanks to as many as eight lens options keeping up to 10 user defined Lens Position Memory (LPM) for focus, zoom, and lens shift
- 3G-SDI and HDBaseT for robustness for long signal transmission without compromise
- Embedded edge-blending and warping technology, to ensure flexible usage in various environments





DX6731



DU6771



DU9000

	DX6731	DU6771	DU9000	
Technology	Display Type	Single 0.7" DLP Technology by Texas Instruments	Single 0.67" DLP Technology by Texas Instruments	Single 0.96" DLP Technology by Texas Instruments
	Brightness	7,000 ANSI Lumens	6,500 ANSI Lumens	11,000 ANSI Lumens
Image	Native Resolution	XGA (1024 x 768)	WUXGA (1920 x 1200)	WUXGA (1920 x 1200)
	Max. Supported Resolution	WUXGA (1920 x 1200)	WUXGA (1920 x 1200) @60Hz	WUXGA (1920 x 1200) @60Hz
	Native Aspect Ratio	4:3	16:10	16:10
	Contrast Ratio	3,000:1	3,000:1	5,000:1
	Keystone Correction	V: +/- 30°, H: +/-25°	V: +/-30°; H: +/-30°	V: +/-35°; H: +/-20°
	Zoom Ratio	Opt. Motorized Lens	Motorized Zoom & Focus	Motorized Zoom & Focus
Optical	Offset	See Lens Shift	Motorized Lens Shift	Motorized Lens Shift
	Lens Shift Range	V: +64%, -33%, H: +24%, -14%	V: +64%, -33%; H: +24%, -14%	V: +/-50%; H: +/-15%
	Projection Lens	dep. optional lens 8 optional lenses from 0.38:1 to 5.31-8.26:1 throw ratio range	8 optional lenses from 0.38:1 to 5.31-8.26:1 throw ratio range	6 optional lenses from 0.84-1.03:1 to 4.0-7.0:1 throw ratio range
Connectivity	I/O Connection Ports	VGA-in, HDMI v1.4 (2x), DVI-D, Component (5 BNC - RGBHV), VGA-out, RJ45 (HDBaseT), RS232, Wired Remote, 12V Trigger, USB mini-B (service)	VGA-In, HDMI v1.4 (x2), DVI-D, RJ45 (HDBaseT/LAN), 3G-SDI In, 3G-SDI Out, Component (5 BNC - RGBHV), VGA-Out, Wired Remote Jack, 12v Trigger (3.5mm Mini-Jack), RS232, USB B (Service)	VGA-In, HDMI v1.4 (x2), RJ45 (HDBaseT/LAN), 3G-SDI In, 3G-SDI Out, Component (3 BNC - YPbPr), Component (3 RGB - YPbPr), 3D-Sync Out, 12v Trigger (3.5mm Mini-Jack), RS232, USB A (Service)
General	Dimensions (W x D x H)	20.1" x 18.5" x 8.3" (510 x 470 x 210 mm)	20.1" x 18.5" x 8.3" (510 x 470 x 210 mm)	19.7" x 24.8" x 9.8" (500 x 630 x 250 mm)
	Weight	44.1 lbs (20 kg)	44.1 lbs (20 kg)	83.7757 lbs (38 kg)
	Speakers	N/A	N/A	N/A
	Noise Level	35dB / 30dB	35dB / 30dB (Normal / Eco. Mode)	45dB / 40dB (Normal / Eco. Mode)
	Lamp Life and Type	UHP Lamp 300W x2, 3000h / 4000h (Normal / Eco mode)	3,000 / TBD Hours (Normal / Eco Mode), 300W x 2	1,500 / 2,000 Hours (Normal / Eco. Mode), 465Wx2
	Power	Supply AC: 100-240V, 50/60Hz Consumption: 697W (Eco mode 572W), <0.5W Standby	Supply: AC 100-240V, 50/60Hz. Consumption: 572W (Eco Mode), 697W (Normal Mode), <0.5W (Standby)	Supply: AC 100-240V, 50/60Hz. Consumption: 910W (Eco. Mode), 1200W (Normal Mode), < 0.5W (Standby Mode w/o network)
	Available Colors	Black and White	Black and White	Black only

Single Lamp Series

Bright and versatile installation

- Full range of resolutions up to WUXGA
- High brightness of up to 7,800 ANSI Lumens
- Contrast ratio 10,000:1
- Lamp life up to 3,500 hours



The D3000 and D5000 Series are designed for large meeting rooms where brightness and installation flexibility is the key consideration.

- Easy setup thanks to horizontal, vertical and centered lens shift
- Installation flexibility is ensured with D5000 series' seven optional lenses ranging from 0.78:1 to 5.01:1 throw ratio, or with D3000 series' wide 1.7x zoom lens to fit conventional medium-sized meeting room settings
- Integration within existing IT network infrastructure for projector monitoring and management, which is possible through the Crestron[®] RoomView compatibility feature





	DX3351	DW3321	DH3331	DU3341	DX5630	D5110W-WNL	D5190HD-WNL	DU5671	
Technology	Display Type	Single 0.7" DLP Technology by Texas Instruments	Single 0.65" DLP Technology by Texas Instruments	Single 0.65" DLP Technology by Texas Instruments	Single 0.67" DLP Technology by Texas Instruments	Single 0.55" DLP Technology by Texas Instruments	Single 0.67" DLP Technology by Texas Instruments	Single 0.65" DLP Technology by Texas Instruments	Single 0.67" DLP Technology by Texas Instruments
	Brightness	6,000 ANSI Lumens	5,100 ANSI Lumens	5,000 ANSI Lumens	5,200 ANSI Lumens	7,800 ANSI Lumens	6,200 ANSI Lumens	4,700 ANSI Lumens	6,200 ANSI Lumens
	Native Resolution	XGA (1024 x 768)	WXGA (1280 x 800)	1080p (1920 x 1080)	WUXGA (1920 x 1200)	XGA (1024 x 768)	WUXGA (1920 x 1200)	1080p (1920 x 1080)	WUXGA (1920 x 1200)
	Max. Supported Resolution	WUXGA (1920 x 1200) @60Hz	WUXGA (1920 x 1200) @60Hz	WUXGA (1920x1200) @60Hz	WUXGA (1920x1200) @60Hz	WUXGA (1920 x 1200)	WUXGA (1920 x 1200)	WUXGA (1920 x 1200) @60Hz	WUXGA (1920 x 1200)
	Native Aspect Ratio	4:3	16:10	16:9	16:10	4:3	16:10	16:9	16:10
	Contrast Ratio	10,000:1	10,000:1	10000:1	10,000:1	2,000:1	2,000:1	2,000:1	2,000:1
Image	Keystone Correction	V: +/-30°; H: +/-25°	V: +/-30°; H: +/-25°	V: +/-30°; H: +/-25°	V: +/-30°; H: +/-25°	V: +/-30°, H: +/-25°	V: +/-30°, H: +/-25°	V: +/-40°	V: +/-30°, H: +/-25°
	Zoom Ratio	1.7x	1.7x	1.7x	1.7x	Opt. Manual Lens	Opt. Manual Lens	Manual Zoom & Focus	Opt. Manual Lens
	Offset	102% - 115%	105% - 141%	105% - 146%	100% - 132%	See Lens Shift	See Lens Shift	Manual Lens Shift	See Lens Shift
	Lens Shift Range	V: +3%, -10.5%; H: +/-3.8%	V: +23.7%, -12.7%; H: +/-10.9%	V: +28.7%, -13.5%; H: +/-10.3%	V: +20.8%, -12.1%; H: +/-10.3%	V: -15%, +55%, H: +/-5%	V: -20%, +60%, H: +/-5%	V: +60%, -10%; H: +/-5%	V: -20%, +60%, H: +/-5%
	Projection Lens	F = 2.45 - 3.22, f = 18.8 - 32 mm	F = 2.45 - 3.22, f = 18.8 - 32 mm	F = 2.45 - 3.22, f = 18.8 - 32 mm	F = 2.45 - 3.22, f = 18.8 - 32 mm	dep. optional lens 7 optional lenses from 0.77:1 to 4.00-5.00:1 throw ratio range	dep. optional lens 7 optional lenses from 0.77:1 to 4.00-5.00:1 throw ratio range	5 optional lenses from 0.78:1 to 3.00-5.01:1 throw ratio range	dep. optional lens 7 optional lenses from 0.77:1 to 4.00-5.00:1 throw ratio range
	Connectivity	I/O Connection Ports	VGA-In (x2), HDMI v1.4 (x2: HDMI/MLX1, HDMIx1), DVI-D, DVI-D, Component (5 BNC - RGBHV), Composite Video, S-Video, USB miniB (USB Display) USB A (x2: PC Free Viewer & Wifi) Audio-In (Mini-Jack x3), Audio-In (RCA), Microphone-In (Mini-Jack), VGA-Out, Audio-Out (Mini-Jack), Audio-Out (RCA), Remote Jack (x2: Wired Remote In and Out), 3D-Sync Out, 12v Trigger (3.5mm Mini-Jack), RJ45 (LAN), RS232, USB B (Service)	VGA-In (x2), HDMI v1.4 (x2: HDMI/MLX1, HDMIx1), DVI-D, DVI-D, Component (5 BNC - RGBHV), Composite Video, S-Video, USB miniB (USB Display) USB A (x2: PC Free Viewer & Wifi) Audio-In (Mini-Jack x3), Audio-In (RCA), Microphone-In (Mini-Jack), VGA-Out, Audio-Out (Mini-Jack), Audio-Out (RCA), Remote Jack (x2: Wired Remote In and Out), 3D-Sync Out, 12v Trigger (3.5mm Mini-Jack), RJ45 (LAN), RS232, USB B (Service)	VGA-In (x2), HDMI v1.4 (x2: HDMI/MLX1, HDMIx1), DVI-D, DVI-D, Component (5 BNC - RGBHV), Composite Video, S-Video, Audio-In (Mini-Jack x3), Audio-In (RCA), Microphone-In (Mini-Jack), VGA-Out, Audio-Out (Mini-Jack), Audio-Out (RCA), Remote Jack (x2: Wired Remote In and Out), 3D-Sync Out, 12v Trigger (3.5mm Mini-Jack), USB A (Power Only), RJ45 (LAN), RS232, USB B (Service)	VGA-In (x2), HDMI v1.4 (x2: HDMI/MLX1, HDMIx1), DVI-D, DVI-D, Component (5 BNC - RGBHV), Composite Video, S-Video, Audio-In (Mini-Jack x3), Audio-In (RCA), Microphone-In (Mini-Jack), VGA-Out, Audio-Out (Mini-Jack), Audio-Out (RCA), Remote Jack (x2: Wired Remote In and Out), 3D-Sync Out, 12v Trigger (3.5mm Mini-Jack), USB A (Power Only), RJ45 (LAN), RS232, USB B (Service)	VGA-in (x2), HDMI v.1.4 (2x), DVI-D, Composite Video, S-Video, Audio-in (Mini-Jack), Audio-in (RCA), VGA-out, Audio-out (Mini-Jack), 3D Sync-out, USB Type A (Power only), RJ45 (LAN), RS232, USB Type B (service)	VGA-in (x2), HDMI v.1.4 (2x), DVI-D, Composite Video, S-Video, Audio-in (Mini-Jack), Audio-in (RCA), VGA-out, Audio-out (Mini-Jack), 3D Sync-out, USB Type A (Power only), RJ45 (HDBaseT), RS232, USB Type B (service)	VGA-In (x2), HDMI, Display Port, DVI-D, Composite Video, S-Video, Component (YpbPr), Audio-in (Mini-Jack), Audio-in (RCA), S-Video, Audio-In (Mini-Jack x2), Audio-In (RCA x2), VGA-Out, Audio-Out (Mini-Jack), 3D Sync-out, USB Type A (Power only), Wired Remote Jack, 3D-Sync Out, 12v Trigger (3.5mm Mini-Jack), USB A (Power Only), RJ45 (LAN), RS232, USB B (Service)
Dimensions (W x D x H)		17.5" x 13" x 6.4" (445 x 331 x 162 mm)	17.5" x 13" x 6.4" (445 x 331 x 162 mm)	17.5" x 13" x 6.4" (445 x 331 x 162 mm)	17.5" x 13" x 6.4" (445 x 331 x 162 mm)	17" x 13.5" x 7.1" (431 x 345 x 181 mm)	17" x 13.5" x 7.1" (431 x 345 x 181 mm)	17.5" x 13" x 6.4" (445 x 331 x 162 mm)	17" x 13.5" x 7.1" (431 x 345 x 181 mm)
Weight		18.5 lbs (8.4 kg)	18.5 lbs (8.4 kg)	18.5 lbs (8.4 kg)	18.5 lbs (8.4 kg)	19 lbs (8.6 kg)	19 lbs (8.6 kg)	18.5 lbs (8.4 kg)	19 lbs (8.6 kg)
Speakers		7W x 2	7W x 2	7W x 2	7W x 2	6W	6W	3W x 2	6W
Noise Level		36dB / 33dB (Normal / Eco. Mode)	36dB / 33dB (Normal / Eco. Mode)	36dB / 33dB (Normal / Eco. Mode)	36dB / 33dB (Normal / Eco. Mode)	39dB / 36dB	39dB / 36dB	42dB / 37dB (Normal / Eco. Mode)	39dB / 36dB
Lamp Life and Type		1,500 / 3,500 Hours (Normal / Eco. Mode), 370W / 280W	1,500 / 3,500 Hours (Normal / Eco. Mode), 370W / 280W	1,500 / 3,500 Hours (Normal / Eco. Mode), 370W / 280W	1,500 / 3,500 Hours (Normal / Eco. Mode), 370W / 280W	UHP Lamp 430W, 2500h / 3000h (Normal / Eco mode), 430W / 320W	UHP Lamp 430W, 2500h / 3000h (Normal / Eco mode), 430W / 320W	1,500 / 3,500 Hours (Normal / Eco. Mode), 370W / 280W	UHP Lamp 430W, 2500h / 3000h (Normal / Eco mode), 430W / 320W
Power		Supply: AC 100-240V, 50/60Hz, Consumption: 380W (Eco. Mode), 480W (Normal Mode), <0.5W (Standby)	Supply: AC 100-240V, 50/60Hz, Consumption: 380W (Eco. Mode), 480W (Normal Mode), <0.5W (Standby)	Supply: AC 100-240V, 50/60Hz, Consumption: 380W (Eco. Mode), 480W (Normal Mode), <0.5W (Standby)	Supply: AC 100-240V, 50/60Hz, Consumption: 380W (Eco. Mode), 480W (Normal Mode), <0.5W (Standby)	Supply AC: 100-240V, 50/60Hz, Consumption: 540W (Eco mode 460W), <0.5W Standby	Supply AC: 100-240V, 50/60Hz, Consumption: 540W (Eco mode 460W), <0.5W Standby	Supply AC: 100-240V, 50/60Hz, Consumption: 340W (Eco. Mode), 450W (Normal Mode), Standby <0.5W	Supply AC: 100-240V, 50/60Hz, Consumption: 540W (Eco mode 460W), <0.5W Standby

Make the connection. Deliver your message. Collaborate with confidence.

Did you know there is a solution for smoother,
easier and more engaging meetings?



Vivitek offers simple and cost-effective wireless connectivity solutions for easy content sharing during meetings. NovoConnect Solution enables you to connect all your laptops, tablets or smartphones without the need for expensive upgrades to your existing infrastructure or network equipment. Best of all, the setup is simple and user-friendly, so you won't need to waste time fumbling around with cables and Wi-Fi settings.

Connect into one simple idea and start to collaborate with no wires no fuss, boosting efficiency and creativity.



NovoConnect Solution

Support Operating System Windows 7 / 8 / 10 (32 bits and 64 bits), Mac 10.7 and above, iOS 7.0 and above, Android 4.0 and above, Chromebook 37+

Launcher



Model	QL200
Wi-Fi	NA
Dimensions (L x W x H)	2.8" x 2.8" x 0.7" (70 x 70 x 18 mm)
Weight	2.8 oz (78 g)

NovoEnterprise



NovoPro



Model	NE3000	NP2000
Desktop Streaming	up to WUXGA/1080p	
Screen Mirroring	Miracast and Google Cast for Android, AirPlay for iOS	
Input	Ethernet RJ45 (PoE); USB Type A x 2; MicroSD Slot; HDMI-In; Audio-in 3.5mm mini jack; DC Jack Power-In	Ethernet RJ45; USB Type A; MicroSD Slot; MicroUSB Power-In
Output	HDMI-Out; Audio-Out 3.5mm mini jack	HDMI-Out
Output Resolution	WUXGA (1920 x 1200), HD1080p (1920 x 1080), WXGA (1280 x 800), HD720p (1280 x 720), XGA (1024 x 768), UHD (3840 x 2160)	WUXGA (1920 x 1200), HD1080p (1920 x 1080), WXGA (1280 x 800), HD720p (1280 x 720), XGA (1024 x 768), UHD (3840 x 2160)
Wi-Fi	802.11ac, b/g/n, 2.4GHz & 5GHz, 2T2R with external antenna	802.11ac, b/g/n 2.4GHz & 5GHz, 2T2R
Security	Dual Network, AES-128 encryption, Kensington lock	
Dimensions (L x W x H)	6.6" x 5" x 0.8" (168 x 126 x 20 mm)	4.7" x 3" x 0.6" (120 x 75 x 16 mm)
Weight	8.8 oz (250 g)	4.5 oz (128 g)

Power Input to AC adaptor: AC 100-240V, 50/60Hz. Output from AC adaptor: 5V/2A Consumption: 10W

NovoTouch

Transform your conference room into a true collaborative space

NovoTouch is a powerful team collaboration solution that's ideal for conference rooms, meeting areas and corporate lobbies. Equipped with Vivitek's NovoConnect, a Bring Your Own Device collaboration technology, NovoTouch offers an advanced approach to group work in an all-in-one display. Featuring digital annotation and wireless capabilities, NovoTouch seamlessly connects users to one display, using technology that allows ideas to flow naturally.



Engage: Users can manipulate content with up to 20 points of touch, common gesture interactivity and on-screen annotation. (Varies by model)

Connect: Up to 64 devices can connect, and four members can share content on the display, for a fluid exchange of ideas.

Collaborate: Effortlessly integrate content into discussions to share ideas, increase productivity and drive innovation.

Inspire: Think differently during group work with side-by-side collaboration on one large display.

Create: Interact with content directly on the display to take notes or emphasize things in real time.

- Ultra HD 4K (3,840 x 2,160) resolution for outstanding details and stunning visuals
- Complete range of sizes including 65-inch, 75-inch, 86-inch and 98-inch display
- ED backlit technology for brighter picture, longer life and lower energy cost
- An anti-glare surface improves the screen visibility in high ambient light environments and a 4mm thick toughened glass provides added protection against screen damage



	65"	75"	86"	98"
	NovoTouch LK6530i	NovoTouch LK7530i	NovoTouch LK8630i	NovoTouch LK9810i
Display Technology	Backlit LED (IPS Panel)	Backlit LED (IPS Panel)	Backlit LED (IPS Panel)	Backlit LED (IPS Panel)
Panel Size; Aspect Ratio	65", 16:9	75", 16:9	86", 16:9	98", 16:9
Brightness (Typ/Min)	350cd/m ² /300cd/m ²	330cd/m ² /300cd/m ²	330cd/m ² /300cd/m ²	440cd/m ² /400cd/m ²
Contrast Ratio (Typical)	1,200:1	1,200:1	1,200:1	1,300:1
Native Resolution	4K Ultra-HD (3840 x 2160)			
Viewing Angle (Horiz/Vert)	178°/178°			
Response Time (MS)	8ms (Typical)			5ms
Refresh Rate (Hz)	60Hz	60Hz	60Hz	120Hz
Display Color (Bit)	1.06 billion (10-bit)			
Orientation	Landscape			
Touch Technology	Infrared Touch			
Touch Points	10 Writing, 20 Touch	10 Writing, 20 Touch	10 Writing, 20 Touch	5 Writing, 10 Touch
Accuracy, Response Time	±2mm, <15ms	±2mm, <15ms	±2mm, <20ms	±2mm, <20ms
Surface Protection	4mm Thick Toughened Glass (Level 7H on Mohs Scale of Mineral Hardness)			
Minimum Touch Object	Single-Touch ≥Φ6mm and Multi-Touch ≥Φ8mm			
Touch Tools	Finger, Stylus, Glove, Opaque Objects			
Gestures Supported	Yes			
System Version	Android™ v6.0	Android™ v6.0	Android™ v6.0	Android™ v4.2.1
CPU	RK3399, Dual-Core ARM® Cortex® A72 and Quad Core ARM® Cortex® A53			ARM® Cortex® A9 Dual Core CPU
GPU	Mali™ T860	Mali™ T860	Mali™ T860	Quad Core GPU
RAM	4GB DDR3	4GB DDR3	4GB DDR3	1.5G RAM
Internal Storage	16GB (eMMC Flash)	16GB (eMMC Flash)	16GB (eMMC Flash)	8GB
OS Compatibility	Windows® (Windows 7 and above: Driver Free), Mac® (10.10 and above), Android™ [2.2/2.3/4.0/4.1/4.2 (Kernel v3.5 and above - Driver Free)], Chrome (v39 and above), Linux (Kernel v3.5 and above)			
I/O Ports	HDMI v2 (x1), HDMI v1.4 (x2), DisplayPort (x1), VGA-In (x1), Audio-In (3.5mm) (x1), AV-In (x1), HDMI-Out (1080P) (x1), Audio-Out (3.5mm) (x1), Coaxial-Out (RCA) (x1), LAN (RJ45) (x1), RS232 (x1), USB Type A 2.0 (x4), USB Type A 3.0 (x2), USB Type B (x2)			HDMI v1.4 (x1), HDMI v1.3 (x3) AV-In (x1), VGA-In (x3), Audio-I (x3), VGA-Out (x1), Audio-Out (3.5mm (x1)), Coaxial-Out (RCA (x1), LAN (RJ45) (x1), RS232 (x1) USB Type A 2.0 (x4), USB 3.0 (x1), USB Type B (x2)
Internal Speakers	12W (x2) (Stereo)	12W (x2) (Stereo)	12W (x2) (Stereo)	10W (x2) (Stereo)
Power Supply (Internal)	AC 100-240V, 50/60Hz			
Dimensions	59.8 x 36 x 3.8 in 1,521 x 915 x 98 mm	69.4 x 40.7 x 3.9 in 1,762 x 1,034 x 100 mm	78.2 x 46.3 x 3.9 in 1,988 x 1,178 x 99.6 mm	88.8 x 52.5 x 4.6 in 2,257 x 1,335 x 118 mm
Weight	104 lbs, 47 kg	132 lbs, 60 kg	172 lbs, 78 kg	331 lbs, 150 kg
Accessories (Standard)	AC Power Cord, VGA Cable, USB Cable, Audio Cable, Stylus (x3), Remote Control, Wall Mount Kit, Documentation Kit			
Accessories (Optional)	LauncherPlus & Windows PC module			
Limited Warranty	3-Year Parts & Labor for all models			
Lifetime (Typical)	30,000 Hours (Minimum)			

NovoDS & NovoDS4K

Make it Simple. Deliver your Message.
Capture your Audience.

NovoDS and NovoDS4k solutions offer an affordable and easy-to-manage digital signage solution that is ideal for creating dynamic visual displays for corporate or public space. You can incorporate text, photos, audio, video, and web content in fully customizable configurations for a variety of environments. It's so simple to use that even non-technical staff members will feel at ease.



- Intuitive playlist creation, publishing and management
- 36 built-in signage templates for easy content creation, or build your own from scratch in seconds
- Synchronized playback among multiple devices
- Efficient HTML5 rendering to support rich interactive content
- Display content in high quality 4K UltraHD
- Network-based management software included
- Dynamic Content – text, photos, audio, video, Google calendar, Twitter, RSS, weather, IP streaming, Youtube and more

NovoDS



NovoDS4K



Display Resolutions	1280 x 720 (16:9, 720p), 1920 x 1080 (16:9, 1080p), 3840 x 2160 (16:9, UltraHD 4K)	1280 x 720 (16:9, 720p), 1920 x 1080 (16:9, 1080p at), 3840 x 2160 (16:9, UltraHD 4K)
Output Orientation	Portrait, Landscape	Portrait, Landscape
Storage	Internal: 8 GB (5.1 GB available for users) External: microSD Card Slot(Up to 32GB), USB Flash Drive	Internal: 32 GB (29 GB available for users) External: microSD Card Slot(Up to 32GB), USB Flash Drive
Connectivity	WiFi: 802.11 AC (2.4 GHz & 5 GHz) Ethernet: 10/100Mbps	WiFi: 802.11 ac (2.4 GHz & 5 GHz) Ethernet: 1Gbps
Media Formats Supported	Images: JPEG, PNG, GIF, BMP Video: MP2, MP4, H.264, VC-1 (WMV) Audio: MP3, WMA, AAC	Images: JPEG, PNG, GIF, BMP Video: MP2, MP4, H.264, VC-1 (WMV) Audio: MP3, WMA, AAC
Input / Output Ports	USB 2.0 Type A (x 1) HDMI Output microSD Card Slot RJ45 DC Power Jack	USB 2.0 Type A (x 2) HDMI Output HDMI Input Audio Output Jack Audio Input Jack microSD Card Slot RJ45 with PoE RS-232 DC Power Jack
LED	Green: System Power on Red: System in Standby Blue: Network Activity	Green: System Power on Red: System in Standby Blue: Network Activity
Button	Reset Button	Reset Button
Power Supply	100 ~ 240 V AC, 50/60 Hz, DC output: 5V@2A	100 ~ 240 V AC, 50/60 Hz, DC output: 5V@2A Power over Ethernet (IEEE 802.3af standard)
Power Consumption	< 10W	< 10W
Accessories	AC-DC Power Adapter HDMI Cable Power Cable Mounting Bracket	AC-DC Power Adapter HDMI Cable Power Cable Mounting Bracket
Operating Systems Supported	Windows® 7.0+, Mac® 10.7+	Windows® 7.0+, Mac® 10.7+
Security Solutions	Kensington® Security Slot	Kensington® Security Slot
Weight	0.28 lbs (128 g)	0.56 lbs (253g)
Dimensions (L x W x H)	4.7" x 2.9" x 0.6" (120 x 75 x 16mm)	6.0" x 4.4" x 0.89" (152 x 113 x 22.5 mm)

Mobile Projector

Power and performance in a compact package



- Full range of resolutions up to 1080p
- High brightness of up to 3,500 ANSI Lumens
- Contrast ratio of up to 15,000:1
- Lamp life up to 10,000 hours



Mobile projectors for small meeting rooms

- Whether fixed installed or as a small portable projector, our entry level series offers compact size and light weight for use in many locations
- The product line offers a variety in resolution and brightness with great image quality
- Up to 10,000 hours of lamp lifetime practically eliminates the need for lamp exchange and reduces the total cost of ownership





	DS262	DX263	DW265	DH268	
Technology	Display Type	Single 0.55" DLP® Technology by Texas Instruments	Single 0.55" DLP® Technology by Texas Instruments	Single 0.65" DLP® Technology by Texas Instruments	
	Brightness	3,500 ANSI Lumens	3,500 ANSI Lumens	3,500 ANSI Lumens	3,500 ANSI Lumens
Image	Native Resolution	SVGA (800 x 600)	XGA (1024 x 768)	WXGA (1280 x 800)	1080p (1920 x 1080)
	Max. Supported Resolution	WUXGA (1920 x 1200)	WUXGA (1920 x 1200)	WUXGA (1920 x 1200)	WUXGA (1920 x 1200)
	Native Aspect Ratio	4:3	4:3	16:10	16:9
	Contrast Ratio	15,000:1	15,000:1	15,000:1	15,000:1
	Keystone Correction	V: +/- 40°	V: +/- 40°	V: +/- 40°	V: +/- 40°
	Throw Ratio	2.4-2.8:1	2.4-2.8:1	2.0-2.4:1	1.8-2.2:1
Optical	Image Size (Diagonal)	60"-300"	60"-300"	60"-300"	60"-300"
	Projection Distance	1.6m-10m	1.6m-10m	1.3m-8.5m	1.2m-7.7m
	Zoom Ratio	1.2x	1.2x	1.2x	1.2x
	Offset	104%	104%	102%	106%
	Projection Lens	F=2.46-2.66, f=21.8-25.6 mm	F=2.46-2.66, f=21.8-25.6 mm	F=2.46-2.66, f=21.8-25.6 mm	F=2.46-2.66, f=21.8-25.6 mm
Connectivity	I/O Connection Ports	VGA-in (x1), HDMI v.1.4b (x2), S-Video, Composite Video, Audio-in (Mini-Jack), VGA-out, Audio-out (Mini-Jack), RS232, USB mini-B (service)	VGA-in (x1), HDMI v.1.4b (x2), S-Video, Composite Video, Audio-in (Mini-Jack), VGA-out, Audio-out (Mini-Jack), RS232, USB mini-B (service)	VGA-in (x1), HDMI v.1.4b (x2), S-Video, Composite Video, Audio-in (Mini-Jack), VGA-out, Audio-out (Mini-Jack), RS232, USB mini-B (service)	VGA-in (x1), HDMI v.1.4b (x2), S-Video, Composite Video, Audio-in (Mini-Jack), VGA-out, Audio-out (Mini-Jack), RS232, USB mini-B (service)
	Dimensions (W x D x H)	13.1" x 9.6" x 4.1" (333 x 244 x 105 mm)	13.1" x 9.6" x 4.1" (333 x 244 x 105 mm)	13.1" x 9.6" x 4.1" (333 x 244 x 105 mm)	13.1" x 9.6" x 4.1" (333 x 244 x 105 mm)
General	Weight	5.7 lbs (2.6 kg)	5.7 lbs (2.6 kg)	5.7 lbs (2.6 kg)	5.7 lbs (2.6 kg)
	Speakers	2W	2W	2W	2W
	Noise Level	32dB / 29dB (Normal / Eco mode)	33dB / 29dB (Normal / Eco mode)	34dB / 29dB (Normal / Eco mode)	35dB / 29dB (Normal / Eco mode)
	Lamp Life and Type	UHP Lamp 210W, 5000h / 7000h / 10000h (Normal / Eco / Dynamic Eco mode)	UHP Lamp 210W, 5000h / 7000h / 10000h (Normal / Eco / Dynamic Eco mode)	UHP Lamp 210W, 5000h / 7000h / 10000h (Normal / Eco / Dynamic Eco mode)	UHP Lamp 210W, 5000h / 7000h / 10000h (Normal / Eco / Dynamic Eco mode)
	Power	Supply AC: 100-240V, 50/60Hz Consumption: 265W (Eco mode 225W), <0.5W Standby	Supply AC: 100-240V, 50/60Hz Consumption: 265W (Eco mode 225W), <0.5W Standby	Supply AC: 100-240V, 50/60Hz Consumption: 265W (Eco mode 225W), <0.5W Standby	Supply AC: 100-240V, 50/60Hz Consumption: 265W (Eco mode 225W), <0.5W Standby

Portable Projectors

Feature-rich with amazing performance

Full range of resolutions up to WUXGA

Brightness up to 6,000 ANSI Lumens

Contrast ratio up to 15,000:1

Lamp life up to 7,000 hours



What is needed for a conference room?

Imagine a setting where a presentation can be shared on the big screen easily, without hassle, by creating a comfortable environment for participants to discuss ideas and make decisions. The wide multimedia projector range offers a variety of features ideal for any conference room:

- The vertical lens shift in the D9 series ensures flexibility and easy installation
- The D9 series will easily integrate with any equipment thanks to a LAN interface and an extensive range of connectivity options, including one or two digital inputs, HDMI and a DisplayPort
- Display the full content of the computer screen onto a large projection





DX831

DW814

DW886

DW832

DH833

DX977

DH976

DU978

	DX831	DW814	DW886	DW832	DH833	DX977	DH976	DU978	
Technology	Display Type	Single 0.55" DLP® Technology by Texas Instruments	Single 0.65" DLP® Technology by Texas Instruments	Single 0.65" DLP® Technology by Texas Instruments	Single 0.55" DLP® Technology by Texas Instruments	Single 0.65" DLP® Technology by Texas Instruments	Single 0.7" DLP® Technology by Texas Instruments	Single 0.65" DLP® Technology by Texas Instruments	Single 0.67" DLP® Technology by Texas Instruments
	Brightness	4,500 ANSI Lumens	3,800 ANSI Lumens	3,800 ANSI Lumens	5,000 ANSI Lumens	4,500 ANSI Lumens	6,000 ANSI Lumens	4,800 ANSI Lumens	5,000 ANSI Lumens
Image	Native Resolution	XGA (1024 x 768)	WXGA (1280 x 800)	WXGA (1280 x 800)	WXGA (1280 x 800)	1080p (1920 x 1080)	XGA (1024 x 768)	1080p (1920 x 1080)	WUXGA (1920 x 1200)
	Max. Supported Resolution	WUXGA (1920 x 1200)	WUXGA (1920 x 1200) @60Hz	WUXGA (1920 x 1200)	WUXGA (1600 x 1200) @60Hz	WUXGA (1920 x 1200) @60Hz	WUXGA (1920 x 1200) @60Hz	WUXGA (1920 x 1200) @60Hz	WUXGA (1920 x 1200) @60Hz
	Native Aspect Ratio	4:3	16:10	16:10	16:10	16:9	4:3	16:9	16:10
	Contrast Ratio	15,000:1	15,000:1	15,000:1	15,000:1	15,000:1	15,000:1	15,000:1	15,000:1
	Keystone Correction	V: +/- 40°	V: +/-40°	V: +/- 40°	V: +/-40°	V: +/-40°	V: +/-30°	Vl: +/-30°	V: +/-30°
	Throw Ratio	1.83-2.75:1	1.28 - 1.54 : 1	1.28-1.54:1	1.46 - 2.20 : 1	1.39 - 2.09 : 1	1.43 - 2.14 : 1	1.39 - 2.09 : 1	1.39 - 2.09 : 1
Optical	Image Size (Diagonal)	25"-270"	30.2" - 302.3"	27"-270"	25.3" - 317.99"	26" - 325"	27.6"- 344.6"	25.9" - 324.9"	26.6" - 334"
	Projection Distance	1.2m-10m	1 - 10 m	1m-10m	1.2 - 10 m	1.2 - 10 m	1.2 - 10 m	1.2 - 10 m	1.2 - 10 m
	Zoom Ratio	1.2x	1.2x	1.2x	1.5x	1.5x	1.5x	1.5x	1.5x
	Offset	112%	112%	112%	112%	113%	112%	115%	122%
	Lens Shift Range	N/A	N/A	N/A	N/A	N/A	V: +8%, -2.5%	V: +15.8%, -3.8%	V: +9%, -3.1%
	Projection Lens	F=2.42-2.97, f=20.70-31.05 mm	F = 2.5 - 2.72, f = 17.81 - 21.35 mm	F=2.8, f=7.51 mm	F = 2.42 - 2.97, f = 20.70 - 31.05 mm	F = 2.42 - 2.97, f = 20.70 - 31.05 mm	F = 2.42 - 2.97, f = 20.9 - 31.05 mm	F = 2.42 - 2.97, f = 20.9 - 31.05 mm	F = 2.42 - 2.97, f = 20.9 - 31.05 mm
	Connectivity	I/O Connection Ports	VGA-in (x2), HDMI v.1.4b (x2), S-Video, Composite Video, Audio-in (RCA), Audio-in (Mini-Jack), VGA-out, Audio-out (Mini-Jack), Microphone-in, RJ45 (LAN), RS232, 12V Trigger, USB-Type A, USB mini-B (service)	VGA-In (x2), HDMI v1.4b, Composite Video, S-Video, Audio-In (Mini-Jack x3), Microphone-In (Mini-Jack), VGA-Out, Audio-Out (Mini-Jack), RJ45 (LAN), 12v Trigger (3.5mm Mini-Jack), USB A (Power Only), RJ45, RS232, USB miniB (Service)	VGA-in, HDMI v.1.4b (x3), S-Video, Composite Video, Audio-in (Mini-Jack), VGA-out, Audio-out (Mini-Jack), Microphone-in, RJ45 (LAN), RS232, 12V Trigger, USB-Type A, USB mini-B (service)	VGA-In (x2), HDMI v1.4 (HDMIx1, S-Video, Composite Video, Audio-In (RCA), Audio-In (Mini-Jack), VGA-Out, Audio-Out (Mini-Jack), Microphone-In (Mini-Jack), USB A (Power Only), USB miniB (Service)	VGA-In, HDMI v1.4 (HDMIx2, S-Video, Composite Video, Audio-In (RCA), Audio-In (Mini-Jack), VGA-Out, Audio-Out (Mini-Jack), Microphone-In (Mini-Jack), USB A (Power Only), USB miniB (Service)	VGA-In (x2), HDMI v1.4 (x2), Display Port, S-Video, Composite Video, Audio-In (RCA), Audio-In (Mini-Jack), VGA-Out, Audio-Out (Mini-Jack), 12v Trigger (3.5mm Mini-Jack), 3D-Sync Out RJ45, RS232, USB B (Service)	VGA-In (x2), HDMI v1.4 (x2), Display Port, S-Video, Composite Video, Audio-In (RCA), Audio-In (Mini-Jack), VGA-Out, Audio-Out (Mini-Jack), 12v Trigger (3.5mm Mini-Jack), 3D-Sync Out RJ45, RS232, USB B (Service)
Dimensions (W x D x H)		12.4" x 8.5" x 5" (314 x 216 x 126 mm)	12.4" x 8.5" x 5" (314 x 216 x 126 mm)	12.4" x 8.5" x 5" (314 x 216 x 126 mm)	12.4" x 8.5" x 5" (314 x 216 x 126 mm)	12.4" x 8.5" x 5" (314 x 216 x 126 mm)	13.1" x 10" x 4.5" (332.8 x 255 x 114.6 mm)	13.1" x 10" x 4.5" (332.8 x 255 x 114.6 mm)	13.1" x 10" x 4.5" (332.8 x 255 x 114.6 mm)
General	Weight	6.8 lbs (3.1 kg)	6.7 lbs (3.05 kg)	6.8 lbs (3.1 kg)	7.1 lbs (3.2 kg)	7.1 lbs (3.2 kg)	8.7 lbs (3.95 kg)	8.7 lbs (3.95 kg)	8.7 lbs (3.95 kg)
	Speakers	10W	10W	10W	10W	10W	3W	3W	3W
	Noise Level	38 dB / 34 dB (Normal / Eco mode)	36dB/32dB (Normal/Eco. Mode)	36 dB / 32 dB (Normal / Eco mode)	38dB / 34dB (Normal / Eco. Mode)	38dB / 34dB (Normal / Eco. Mode)	36dB / 30dB (Normal / Eco. Mode)	36dB / 30dB (Normal / Eco. Mode)	36dB / 30dB (Normal / Eco. Mode)
	Lamp Life and Type	UHP Lamp 310W, 2,500h / 3,000h / 3,500h (Normal / Eco / Dynamic Eco mode)	3,500 / 5,000 / 7,000 Hours (Normal / Eco. / Dynamic Eco. Mode), 240W / 190W	UHP Lamp 240W, 3,500h / 5,000h / 7,000h (Normal / Eco / Dynamic Eco mode)	2,500 / 3,000 / 3,500 Hours (Normal / Eco. / Dynamic Eco. Mode), 310W / 245W	2,500 / 3,000 / 3,500 Hours (Normal / Eco. / Dynamic Eco. Mode), 310W / 245W	2,500 / 3,500 / 4,000 Hours (Normal / Eco. / Dynamic Eco. Mode), 310W / 245W	2,500 / 3,500 / 4,000 Hours (Normal / Eco. / Dynamic Eco. Mode), 310W / 245W	2,500 / 3,500 / 4,000 Hours (Normal / Eco. / Dynamic Eco. Mode), 310W / 245W
	Power	Supply AC: 100-240V, 50/60Hz Consumption: 410W (Eco mode 320W), <0.5W Standby	Supply: AC 100-240V, 50/60Hz. Consumption: 260W (Eco. Mode), 320W (Normal Mode), <0.5W (Standby).	Supply AC: 100-240V, 50/60Hz Consumption: 320W (Eco mode 260W), <0.5W Standby	Supply: AC 100-240V, 50/60Hz. Consumption: 320W (Eco. Mode), 410W (Normal Mode), <0.5W (Standby).	Supply: AC 100-240V, 50/60Hz. Consumption: 320W (Eco. Mode), 410W (Normal Mode), <0.5W (Standby)	Supply: AC 100-240V, 50/60Hz. Consumption: 300W (Eco. Mode), 370W (Normal Mode), <0.5W (Standby)	Supply: AC 100-240V, 50/60Hz. Consumption: 300W (Eco. Mode), 370W (Normal Mode), <0.5W (Standby)	Supply: AC 100-240V, 50/60Hz. Consumption: 300W (Eco. Mode), 370W (Normal Mode), <0.5W (Standby)

Education

Vivitek - The Reliable Teaching Partner

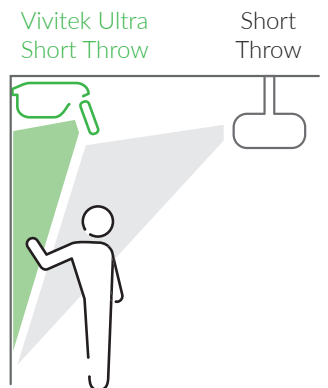
Enhance the learning experience with a Vivitek projector and effectively share information on the big screen. In addition to projectors, Vivitek has developed NovoConnect - wireless presentation and collaborative solutions, allowing teachers and students to interact for a better learning experience.

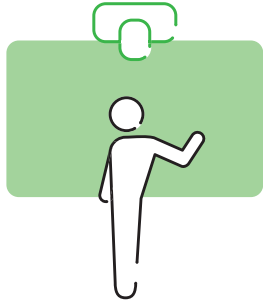


Education projectors

Display Large Image in Limited Space

Vivitek's Ultra-Short Throw projectors can display a large 100" (2 meters) wide diagonal image from an extremely short distance of 16" (42cm) from the screen.





Comfort for Presenters

You don't have to worry about finding a suitable place for yourself during your presentation. The Ultra-Short Throw series of projectors is capable of projecting a large image from an ultra-short distance, meaning you are free to stand in front of the projector without blocking the image, casting a shadow on the screen, or having light shine directly into your eyes.

Flexible Mounting

The Ultra-Short Throw projectors are a perfect fit for classrooms. These projectors can be wall-mounted directly above the projection surface or placed on a desktop, almost up against the wall. Simply choose the display method that works best for the environment.



Wall-mounted



Ceiling-mounted



Desktop placement



Education Warranty Program

Vivitek realizes that investing in projection equipment is an important business decision so we have you covered. Vivitek offers extended warranties for all educational institutions in the EMEA region:

- 5 years on projectors, and 3 years or 2,000 hours on lamp usage, whichever comes first
- For all models purchased by educational institutions in the EMEA region
- Available for all projectors listed in the education portfolio
- For more information on our education warranty program please visit www.vivitekusa.com or contact your Vivitek Authorised Reseller

Short Throw Projectors

Visual learning at its best

- Full range of resolutions up to WXGA
- High brightness up to 3,600 ANSI Lumens
- Contrast ratio up to 15,000:1
- Operation life time up to 10,000 hours



The short throw projectors
are a great fit for classrooms

- The short-throw can create up to 90" diagonal image from less than 39" (or 1m) away
- NovoConnect Collaboration Solution will enhance the classroom collaboration





	DX281ST	DW282ST	DW884ST	
Technology	Display Type	Single 0.55" DLP® Technology by Texas Instruments	Single 0.65" DLP® Technology by Texas Instruments	Single 0.65" DLP® Technology by Texas Instruments
	Brightness	3,000 ANSI Lumens	3,200 ANSI Lumens	3,600 ANSI Lumens
Image	Native Resolution	XGA (1024 x 768)	WXGA (1280 x 800)	WXGA (1280 x 800)
	Max. Supported Resolution	WUXGA (1920 x 1200)	WUXGA (1920 x 1200)	WUXGA (1920 x 1200)
	Native Aspect Ratio	4:3	16:10	16:10
	Contrast Ratio	15,000:1	15,000:1	15,000:1
	Keystone Correction	V: +/- 40°	V: +/- 40°	V: +/- 40°
	Throw Ratio	0.62:1	0.49:1	0.52:1
Optical	Image Size (Diagonal)	55"-86"	70"-100"	40"-300"
	Projection Distance	0.7m-1.1m	0.74m-1.06m	0.4m-3.2m
	Zoom Ratio	N/A	N/A	N/A
	Offset	114%	111%	120%
	Projection Lens	F=2.65, f=22.9 mm	F=2.65, f=22.9 mm	F=2.8, f=7.51 mm
Connectivity	I/O Connection Ports	VGA-in (x1), HDMI v.1.4b (x2), S-Video, Composite Video, Audio-in (Mini-Jack), VGA-out, Audio-out (Mini-Jack), RS232, USB mini-B (service)	VGA-in (x1), HDMI v.1.4b (x2), S-Video, Composite Video, Audio-in (Mini-Jack), VGA-out, Audio-out (Mini-Jack), RS232, USB mini-B (service)	VGA-in, HDMI v.1.4b (x3), S-Video, Composite Video, Audio-in (Mini-Jack), VGA-out, Audio-out (Mini-Jack), Microphone-in, RJ45 (LAN), RS232, 12V Trigger, USB-Type A, USB mini-B (service)
General	Dimensions (W x D x H)	13.1" x 9.6" x 4.1" (333 x 244 x 105 mm)	13.1" x 9.6" x 4.1" (333 x 244 x 105 mm)	12.4" x 8.5" x 5" (314 x 216 x 126 mm)
	Weight	5.7 lbs (2.6 kg)	5.7 lbs (2.6 kg)	6.8 lbs (3.1 kg)
	Speakers	2W	2W	10W
	Noise Level	36dB / 29dB (Normal / Eco mode)	37dB / 29dB (Normal / Eco mode)	36dB / 32dB (Normal / Eco mode)
	Lamp Life and Type	UHP Lamp 210W, 5000h / 7000h / 10000h (Normal / Eco / Dynamic Eco mode)	UHP Lamp 210W, 5000h / 7000h / 10000h (Normal / Eco / Dynamic Eco mode)	UHP Lamp 240W, 3500h / 5000h / 7000h (Normal / Eco / Dynamic Eco mode)
	Power	Supply AC: 100-240V, 50/60Hz Consumption: 265W (Eco mode 225W), <0.5W Standby	Supply AC: 100-240V, 50/60Hz Consumption: 265W (Eco mode 225W), <0.5W Standby	Supply AC: 100-240V, 50/60Hz Consumption: 320W (Eco mode 260W), <0.5W Standby

Ultra-Short Throw Projectors

Visual learning at its best

- Full range of resolutions up to 1080p
- High brightness up to 4,000 ANSI Lumens
- Contrast ratio up to 15,000:1
- Operation life time up to 20,000 hours laser phosphors projectors



Ultra-short throw projectors
are a great fit for classrooms

- The ultra-short throw projector delivers up to 100" diagonal image just from 16"
- The ultra-short projector series can be mounted extremely close to the wall and remove shadow and glare issues
- NovoConnect Collaboration Solution will enhance the classroom collaboration





	D755WT	DH758UST	D756USTi	DH759USTi	DW763Z-UST	DH765Z-UST	
Technology	Display Type	Single 0.65" DLP® Technology by Texas Instruments	Single 0.65" DLP® Technology by Texas Instruments	Single 0.65" DLP® Technology by Texas Instruments	Single 0.65" DLP® Technology by Texas Instruments	Single 0.65" DLP® Technology by Texas Instruments	
	Brightness	3,300 ANSI Lumens	3,500 ANSI Lumens	3,300 ANSI Lumens	3,500 ANSI Lumens	4,000 ANSI Lumens	4,000 ANSI Lumens
Image	Native Resolution	WXGA (1280 x 800)	1080p (1920 x 1080)	WXGA (1280 x 800)	1080p (1920 x 1080)	WXGA (1280 x 800)	1080p (1920 x 1080)
	Max. Supported Resolution	WUXGA (1920 x 1200) @60Hz	WUXGA (1920 x 1200) @60Hz	WUXGA (1920 x 1200) @60Hz	WUXGA (1920 x 1200) @60Hz	WUXGA (1920 x 1200)	WUXGA (1920 x 1200)
	Native Aspect Ratio	16:10	16:9	16:10	16:9	16:10	16:9
	Contrast Ratio	10,000:1	10,000:1	10,000:1	10,000:1	12,000:1	12,000:1
	Keystone Correction	V: +/- 40°	V: +/- 40°	V: +/- 40°	V: +/- 40°	V: +/- 30°, H: +/- 30°	V: +/- 30°, H: +/- 30°
	Throw Ratio	0.35:1	0.33: 1	0.35: 1	0.33: 1	0.24:1	0.23:1
Optical	Image Size (Diagonal)	80"- 100"	88" - 110"	80"- 100"	88" - 110"	80"-150"	80"-150"
	Projection Distance	11"-17.5" (283 - 446 mm)	13.4"-15.6" (341 - 398 mm)	11"-17.5" (283 - 446 mm)	13.4"-15.6" (341 - 510 mm)	0.3m-0.7m	0.3m-0.7m
	Zoom Ratio	1x	1x	1x	1x	N/A	N/A
	Offset	120%	124%	120%	124%	130%	137%
	Projection Lens	F = 2.5, f = 5.1 mm	F = 2.5, f = 5.1 mm	F = 2.5, f = 5.1 mm	F = 2.5, f = 5.1 mm	Ultra Short Throw	Ultra Short Throw
Connectivity	I/O Connection Ports	VGA-In (x2), HDMI v1.4, Display Port, Composite Video, S-Video, Audio-In (Mini-Jack), Audio-In (RCA), Microphone-In (Mini-Jack) VGA-Out, Audio-Out (Mini-Jack), 3D-Sync Out, USB A (Power Only), RJ45, RS232, USB B (Service)	VGA-In (x2), HDMI v1.4 (x2: HDMI/MHLx1, HDMlX1), Composite Video, S-Video, Audio-In (Mini-Jack), Audio-In (RCA), Microphone-In (Mini-Jack) VGA-Out, Audio-Out (Mini-Jack), USB A (Power Only), RJ45, RS232, USB B (Service)	VGA-In (x2), HDMI v1.4 (x2), Composite Video, S-Video, Audio-In (Mini-Jack), Audio-In (RCA), Microphone-In (Mini-Jack) VGA-Out, Audio-Out (Mini-Jack), USB A (Power Only), RJ45, RS232, USB B (Service), USB miniB (Interactivity), Interactive Function - IR Pen, Optional Finger Touch	VGA-In (x2), HDMI v1.4 (x2: HDMI/MHLx1, HDMlX1), Composite Video, S-Video, Audio-In (Mini-Jack), Audio-In (RCA), Microphone-In (Mini-Jack) VGA-Out, Audio-Out (Mini-Jack), USB A (Power Only), RJ45, RS232, USB B (Service), USB miniB (Interactivity), Interactive Function - IR Pen, Optional Finger Touch	VGA-in, HDMI v.1.4b (x2), S-Video, Composite Video, Audio-in (RCA), Audio-in (Mini-Jack), VGA-out, Audio-out (Mini-Jack), Microphone-in, RJ45 (LAN), RS232, USB-Type A, USB mini-B (service)	VGA-in, HDMI v.1.4b (x2), S-Video, Composite Video, Audio-in (RCA), Audio-in (Mini-Jack), VGA-out, Audio-out (Mini-Jack), Microphone-in, RJ45 (LAN), RS232, USB-Type A, USB mini-B (service)
General	Dimensions (W x D x H)	11.3" x 14.7" x 4.8" 288 x 375 x 123 mm (not including height of mirror)	11.3" x 14.7" x 4.8" 288 x 375 x 123 mm (not including height of mirror)	11.3" x 14.7" x 4.8" 288 x 375 x 123 mm (not including height of mirror)	11.3" x 14.7" x 4.8" 288 x 375 x 123 mm (not including height of mirror)	20" x 15.4" x 5.7" (509 x 391 x 145mm)	20" x 15.4" x 5.7" (509 x 391 x 145mm)
	Weight	11 lbs (5 kg)	11 lbs (5 kg)	11 lbs (5 kg)	11 lbs (5 kg)	22 lbs (10 kg)	22 lbs (10 kg)
	Speakers	10W x 2	10W x 2	10W x 2	10W x 2	10W	10W
	Noise Level	33dB / 29dB (Normal / Eco. Mode)	37dB / 33dB (Normal / Eco. Mode)	33dB / 29dB (Normal / Eco. Mode)	37dB / 33dB (Normal / Eco. Mode)	30dB / 28dB (Normal / Eco mode)	30dB / 28dB (Normal / Eco mode)
	Lamp Life and Type	5,000 / 10,000 Hours (Normal / Eco. Mode). 230W / 200W	3,000 / 4,000 / 7,000 Hours (Normal / Eco. / Dynamic Eco. Mode). 280W / 230W	5,000 / 10,000 Hours (Normal / Eco. Mode). 230W / 200W	3,000 / 4,000 / 7,000 Hours (Normal / Eco. / Dynamic Eco. Mode). 280W / 230W	Lamp free design, Laser light source lasting up to 20,000 hours	Lamp free design, Laser light source lasting up to 20,000 hours
	Power	Supply: AC 100-240V, 50/60Hz. Consumption: 250W (Eco. Mode), 290W (Normal Mode), <0.5W (Standby)	Supply: AC 100-240V, 50/60Hz. Consumption: 320W (Eco. Mode), 380W (Normal Mode) <0.5W (Standby)	Supply: AC 100-240V, 50/60Hz. Consumption: 290W (Normal Mode), 250W (Eco. Mode), <0.5W (Standby)	Supply: AC 100-240V, 50/60Hz. Consumption: 380W/320W (Normal/Eco. Mode), <0.5W (Standby)	Supply AC: 100-240V, 50/60Hz, Consumption: 380W (Eco mode 315W), <0.5W Standby	Supply AC: 100-240V, 50/60Hz, Consumption: 380W (Eco mode 315W), <0.5W Standby

Home Cinema Projectors

True cinema for your home

- Full range of resolutions up to 4K UHD
- Brightness up to 4,000 ANSI Lumens
- Contrast ratio up to 50,000:1
- Lamp life up to 20,000 hours laser phosphor projectors



The Vivitek Home Cinema projectors will turn your living room into a movie theater

- Enjoy your favorite movie in 4K UHD resolution and up to 50,000:1 contrast ratio
- Film fans will appreciate the enhanced viewing experience thanks to VividMotion frame interpolation function. The function reduces motion judder to create a fluid and flawless video stream





H1188

H5098

DH768Z-UST

HK2288

HK2488

	H1188	H5098	DH768Z-UST	HK2288	HK2488		
Technology	Display Type	Single 0.65" DLP Technology by Texas Instruments	Single 0.65" DLP Technology by Texas Instruments	Single 0.65" DLP Technology by Texas Instruments	Single 0.66" DLP Technology by Texas Instruments	Single 0.66" DLP Technology by Texas Instruments	
	Brightness	2,000 ANSI Lumens	2,000 ANSI Lumens	3,200 ANSI Lumens	2,000 ANSI Lumens	4,000 ANSI Lumens	
Image	Native Resolution	1080p (1920 x 1080)	1080p (1920 x 1080p)	1080p (1920 x 1080)	UHD (3840 x 2160)	UHD (3840 x 2160)	
	Max. Supported Resolution	WUXGA (1920 x 1200) @60Hz	WUXGA (1920 x 1200) @60Hz	WUXGA (1920 x 1200)	UHD (3840 x 2160)	UHD (3840 x 2160)	
	Native Aspect Ratio	16:9	16:9	16:9	16:9	16:9	
	Contrast Ratio	50,000:1	50,000:1	12,000:1	50,000:1	50,000:1	
	Keystone Correction	V: +/- 40°	V: +/-30°	V: +/- 30°, H: +/-30°	N/A	N/A	
Optical	Throw Ratio	1.39 - 2.09:1	1.54 - 1.93:1 (Standard Lens Included)	0.23:1	1.39-2.08:1	1.39-2.08:1	
	Image Size (Diagonal)	25.9" - 324.9"	35" - 205"	80"-150"	26"-330"	26"-330"	
	Projection Distance	3.9' - 32.8' (1.2 - 10m)	4.9' - 23' (1.5 - 7 m)	0.3m-0.7m	1.2m-10m	1.2m-10m	
	Zoom Ratio	1.5x	1.25x	N/A	1.5x	1.5x	
	Offset	115%	-20% / +110%	137%	115%	115%	
	Lens Shift Range	V +9%, -5%	V +60%, -20%; H +/-5%	N/A	N/A	N/A	
	Projection Lens	F = 2.418 - 2.97, f = 20.7 - 31.05 mm	F = 2.46 - 2.56, f = 22.8 - 28.5 mm	Ultra Short Throw	F= 2.42-2.97, f=20.70-31.05 mm	F= 2.42-2.97, f=20.70-31.05 mm	
	Connectivity	I/O Connection Ports	VGA-In, HDMI v1.4 (HDMIx1, HDMI/MHLx1), Component (3 RGB - YPbPr), Composite Video, Audio-In (RCA), 3D-Sync Out, 12v Trigger (3.5mm Mini-Jack), USB A (Power Only), RS232, USB miniB (Service)	VGA-In, HDMI v1.4 (x2: HDMI/MHLx1, HDMIx1), Component (3 RGB - YPbPr), Composite Video, 3D-Sync Out, 12v Trigger (3.5mm Mini-Jack), USB A (Power Only), RS232, USB B (Service)	VGA-in, HDMI v.1.4b (x2), S-Video, Composite Video, Audio-in (RCA), Audio-in (Mini-Jack), VGA-out, Audio-out (Mini-Jack), Microphone-in, RJ45 (LAN), RS232, USB-Type A, USB mini-B (service)	HDMI v.2.0 (x2), Audio-in (Mini-Jack), Audio-out (Mini-Jack), RS232, USB-Type A	HDMI v.2.0 (x2), Audio-in (Mini-Jack), Audio-out (Mini-Jack), RS232, USB-Type A
		Dimensions (W x D x H)	11.2" x 10.3" x 4.8" 285 x 261 x 121.8 mm	17" x 13.6" x 7.1" 432 x 345 x 181 mm	20" x 15.4" x 5.7" (509 x 391 x 145mm)	16.9" x 14.2" x 5.7" (430 x 360 x 145 mm)	16.9" x 14.2" x 5.7" (430 x 360 x 145 mm)
	General	Weight	6.9 lbs (3.15 kg)	20.5 lbs (9.3 kg)	22 lbs (10 kg)	19.8 lbs (9 kg)	19.8 lbs (9 kg)
Speakers		10W	N/A	10W	10W	10W	
Noise Level		34dB / 29dB (Normal / Eco. Mode)	29dB / 27dB (Normal / Eco. Mode)	30dB / 28dB (Normal / Eco mode)	33dB / 29dB (Normal / Eco mode)	33dB / 29dB (Normal / Eco mode)	
Lamp Life and Type		3,000 / 4,000 / 5,000 Hours (Normal / Eco. / Dynamic Eco. Mode), 290W / 205W	2,500 / 3,500 Hours (Normal / Eco. Mode), 280W / 230W	Lamp free design, Laser light source lasting up to 20,000 hours	UHP Lamp 310W, 2,500h / 3,500h / 4,000h (Normal / Eco / Dynamic Eco mode)	UHP Lamp 330W, 2,500h / 3,500h / 4,000h (Normal / Eco / Dynamic Eco mode)	
Power		Supply: AC 100-240V, 50/60Hz. Consumption: 240W (Eco. Mode), 290W (Normal Mode), <0.5W (Standby)	Supply: AC 100-240V, 50/60Hz. Consumption: 230W (Eco. Mode), 280W (Normal Mode), <0.5W (Standby)	Supply AC: 100-240V, 50/60Hz Consumption: 380W (Eco mode 315W), <0.5W Standby	Supply AC: 100-240V, 50/60Hz Consumption: 450W (Eco mode 380W), <0.5W Standby	Supply AC: 100-240V, 50/60Hz Consumption: 470W (Eco mode 400W), <0.5W Standby	

Pocket & Personal Projectors

For Fun, Business and Education

QUMI

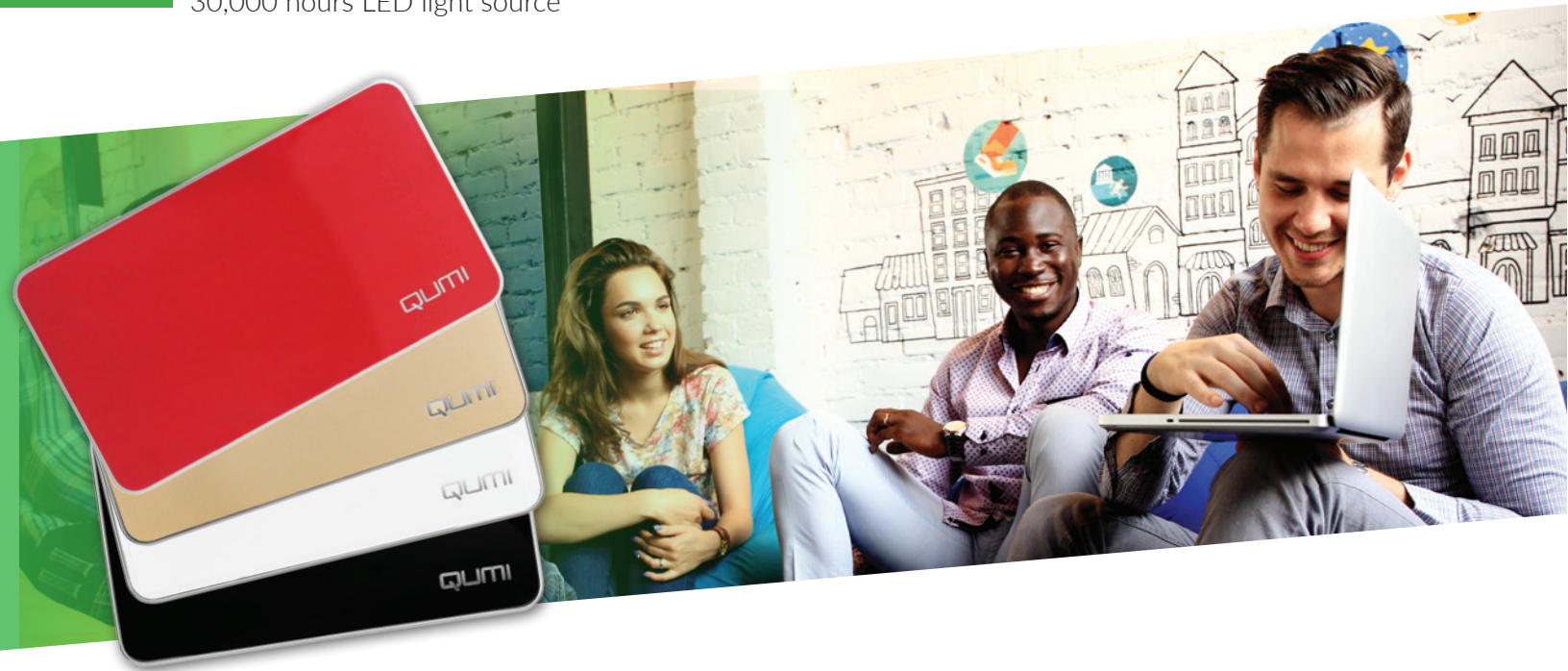


Full range of resolutions up to Full HD 1080p

High brightness up to 1,000 Lumens

Contrast ratio up to 30,000:1

30,000 hours LED light source



Great portability, sleek design and pocket size make Qumi projectors the perfect portable companion for business and entertaining

- Bright and sharp images made easy with the Qumi projecting an image up to 120" diagonal and 30,000:1 contrast ratio for details
- Effortless sharing via Wi-Fi connection that enables content sharing from Android™, iOS, Mac and Windows devices
- Freedom to use the Qumi without a computer, with embedded media and document viewer for PC-free playback of documents, photos, videos and audio files





Model	Qumi Q3 Plus	Qumi Q6	Qumi Q38	Qumi Qube	Qumi Q8	
Technology	Display Type	Single chip DLP® Technology by Texas Instruments	Single chip DLP® Technology by Texas Instruments	Single 0.33" DLP® Technology by Texas Instruments	Single 0.45" DLP® Technology by Texas Instruments	Single chip DLP® Technology by Texas Instruments
	Light source Type and Life	LED light source; 30,000 Hours	LED light source; 30,000 Hours	LED light source; 30,000 Hours	LED light source; 30,000 Hours	LED light source; 30,000 Hours
Image	Native Resolution	HD720p (1280 x 720)	WXGA (1280 x 800)	1080p (1920 x 1080)	WXGA (1280 x 800)	1080p (1920 x 1080)
	Max. Supported Resolution	1080p (1920 x 1080) @60Hz	1080p (1920 x 1080) @60Hz	UHD (3840 x 2160)	UHD (3840 x 2160)	1080p (1920 x 1080) @60Hz
	Brightness	500 Lumens	800 Lumens	600 Lumens	800 Lumens	1,000 Lumens
	Contrast Ratio	5,000:1	30,000:1	5,000:1	30,000:1	30,000:1
	Keystone Correction	Automatic Vertical Keystone	Automatic Vertical Keystone	V: +/- 40° + Auto	V: +/- 40°	Automatic Vertical Keystone & Manual Horizontal Keystone
Optical	Throw Ratio	1.66:1	1.55:1	1.2:1	1.2:1	1.5:1
	Image Size (Diagonal)	19" - 100"	30" - 90"	30"-120"	30"-120"	40" - 120"
	Projection Distance	2.3' - 12.1' (0.7 - 3.7 m)	3.2' - 9.8' (1 - 3 m)	0.7m-3m	0.7m-3m	4.3' - 13.1' (1.33 - 4 m)
	Zoom Ratio	1x	1x	N/A	N/A	1x
	Offset	100%	105%	100%	100%	110%
Connectivity	I/O Connection Ports	HDMI, Composite via Mini-Jack Port (Shared), Audio-Out Mini-Jack, USB type A x2 for multimedia and document viewer, microSD Slot	HDMI/MHL, HDMI, Audio-Out Mini-Jack, USB type A for multimedia and document viewer	HDMI v.1.4b, AV (Mini-Jack), Audio-out (Mini-Jack), USB-Type A (x2), WiFi, Bluetooth, Battery (2h)	HDMI v.1.4b, AV (Mini-Jack), Audio-out (Mini-Jack), USB-Type A (x2), WiFi, Bluetooth, Battery (3h), 5.2" touch panel	HDMI/MHL, Audio-Out Mini-Jack, USB type A for multimedia and document viewer
	Wireless Connection	Built-In	Built-In	Built-In	Built-In	Built-In
	Bluetooth	Built-In	Built-In	Built-In	Built-In	-
Feature	PC Free Multimedia Player and Document Viewer	Image, Video, Audio, and Document (Microsoft® Word, Excel, PowerPoint; PDF)	Image, Video, Audio, Document (Microsoft Word, Excel, Powerpoint, PDF)	Image, Video, Audio, Document (Microsoft Word, Excel, Powerpoint, PDF)	Image, Video, Audio, and Document (Microsoft® Word, Excel, PowerPoint; PDF)	
	Battery	Embedded battery	Optional battery	Optional battery	Optional battery	Optional battery
General	Dimensions (W x D x H)	6.9" x 4.1" x 1.1" 176 x 103 x 28 mm	6.5" x 4.1" x 1.3" 165 x 103 x 34 mm	7.3" x 4.6" x 1.4" (186 x 116 x 35 mm)	5.7" x 5.7" x 6.9" (145x 145 x 175 mm)	7.5" x 4.5" x 1.7" 190 x 114 x 43 mm
	Weight	16.2 oz (460 g)	16.8 oz (475 g)	1.3 lbs (0.6 kg)	2.6 lbs (1.2 kg)	21.9 oz (621 g)
	Speakers	2W x 2	2W x 1	4W	20W	2W x 1
	Power	Supply: AC 100-240V, 50/60Hz. Consumption: 36W (Normal Mode), <0.5W (Standby)	Supply: AC 100-240V, 50/60Hz. Consumption: 52W (Eco. Mode), 66W (Normal Mode), <0.5W (Standby)	Supply AC: 100-240V, 50/60Hz, Consumption: 36, <0.5W Standby	Supply AC: 100-240V, 50/60Hz, Consumption: 36, <0.5W Standby	Supply: AC 100-240V, 50/60Hz. Consumption: 45W (Eco. Mode), 55W (Normal Mode), <0.5W (Standby)
	Noise Level	33dB (Normal Mode)	34dB / 30dB (Normal / Eco. Mode)	30dB / 28dB (Normal / Eco mode)	33dB / 30dB (Normal / Eco mode)	34dB / 31dB (Normal / Eco. Mode)
	Available Colors	Black, White, Red, Gold	Black, White, Light Blue, Red, Orange, Gold, Charcoal Gray	Black, White, Red	White and Silver	Black, White

Accessories

See how you can adjust Vivitek projectors to meet your individual needs.

D5000 & D7000 Series Optional Manual Lenses



Lens Type	Short Throw Lens	Short Throw Zoom Lens	Standard Short Throw Lens	Semi Short Throw Lens	Standard Lens	Long Throw Lens	Super Long Throw Lens
Model	VL904G/LNS-5FX2	VL911G/LNS-5WZ2	VL907G/LNS-5STZ	VL912G/LNS-5STZ2	VL906G/LNS-5SZ12	VL908G/LNS-5LZ23	VL909G/LNS-5LZ2
Focus/Zoom Type	Manual	Manual	Manual	Manual	Manual	Manual	Manual
Zoom	N/A	1.42x	1.18x	1.28x	1.25x	1.5x	1.67x
Throw Ratio	WUXGA: 0.78:1	WUXGA: 0.77 - 1.1:1	WUXGA:1.1 - 1.3:1	WUXGA: 1.25 - 1.60:1	WUXGA: 1.54 - 1.93:1	WUXGA: 1.93 - 2.9:1	WUXGA: 3 - 5:1
F Number	2.54	2.1 - 2.6	2.05 - 2.27	2.0 - 2.44	2.0 - 2.09	2.5 - 3.1	2.2 - 2.5
Focal Length (F)	11.46mm	11.45 - 16.32mm	16.64 - 19.54mm	18.65 - 23.85mm	22.84 - 28.61mm	28.5 - 42.75mm	44.5 - 74.19mm
Image Size (Diagonal Image Size/ Optimal Focus Range)	47.8" - 298.3"	42.3" - 300"	35.8" - 379.8"	39.1" - 300"	36.1" - 300"	32.1" - 481.1"	27.9" - 309.5"
Projection Distance (Approximate/Optimal Focus Range)	0.8 - 5m	1m - 4.98m	1 - 9m	1.346 - 8.078m	1.5 - 9.95m	2 - 20m	3 - 20m
Lens Shift Range	Vertical: -15% to +55%, Horizontal: -5% to +5%	Vertical: -15% to +55%, Horizontal: -5% to +5%	Vertical: -15% to +55%, Horizontal: -5% to +5%	Vertical: -15% to +55%, Horizontal: -5% to +5%	Vertical: -15% to +55%, Horizontal: -5% to +5%	Vertical: -15% to +55%, Horizontal: -5% to +5%	Vertical: -15% to +55%, Horizontal: -5% to +5%
Part Number	5811120818-SVV	5811122742-SVV	5811120054-SVV	5811122743-SVV	5811120865-SVV	5811119237-SVV	5811120055-SVV

D6000 & D8000 Series Optional Motorized Lenses



Lens Type	Ultra Short Throw	Ultra Wide Zoom	Wide Fix	Wide Zoom	Standard	Semi Long Zoom	Long Zoom 1	Long Zoom 2	
Model	D88-UST01B	D88-UWZ01	D88-WF18501	D88-WZ01	D88-ST001	D88-SMLZ01	D88-LOZ101	D88-LOZ201	
Focus / Zoom Type	Motorized	Motorized	Motorized	Motorized	Motorized	Motorized	Motorized	Motorized	
Zoom	Fixed zoom 1x	1.25x	Fixed zoom	1.41x	1.3x	1.65x	1.5x	1.55x	
F Number	2.0	1.96 - 2.3	1.85	1.85 - 2.5	1.7-1.9	1.86-2.48	1.85-2.41	1.85-2.48	
Focal Length (f)	5.64 mm	11.3 - 14.1 mm	11.6 mm	18.7 - 26.5 mm	26 - 34 mm	32.9 - 54.2 mm	52.8 - 79.1 mm	78.5 - 121.9 mm	
Throw Ratio	WUXGA	0.38:1	0.75 - 0.93:1	0.76:1	1.25 - 1.79:1	1.73 - 2.27:1	2.22 - 3.67:1	3.58 - 5.38:1	5.31 - 8.26:1
	WXGA	0.40:1	0.78 - 0.99:1	0.8:1	1.31 - 1.87:1	1.81 - 2.38:1	2.33 - 3.86:1	3.76 - 5.64:1	5.56 - 8.67:1
	XGA	0.39:1	0.77 - 0.97:1	0.79:1	1.3 - 1.85:1	1.79 - 2.35:1	2.3 - 3.81:1	3.71 - 5.57:1	5.5 - 8.56:1
Image Size	WUXGA	100" - 350"	40" - 500"	40" - 500"	40" - 500"	40" - 500"	40" - 500"	40" - 500"	
	WXGA	100" - 350"	40" - 500"	40" - 500"	40" - 500"	40" - 500"	40" - 500"	40" - 500"	
	XGA	100" - 350"	40" - 500"	40" - 500"	40" - 500"	40" - 500"	40" - 500"	40" - 500"	
Projection Distance	WUXGA	2.8' - 9' (0.85 - 2.74 m)	2' - 34' (0.62 - 10.36 m)	2.1' - 27.9' (0.64 - 8.50 m)	3.6' - 67.5' (1.05 - 19.59 m)	4.8' - 81.5' (1.45 - 24.85 m)	6.1' - 132.3' (1.87 - 40.33 m)	9.9' - 193.6' (3.01 - 59.02 m)	14.5' - 300.2' (4.42 - 91.54 m)
	WXGA	2.8' - 9.1' (0.89 - 2.87 m)	2.1' - 35.8' (0.65 - 10.91 m)	0.67 - 8.92 m	3.6' - 67.5' (1.11 - 20.58 m)	5' - 85.5' (1.53 - 26.11 m)	6.5' - 139' (1.97 - 42.35 m)	10.5' - 203' (3.17 - 61.97 m)	15' - 315' (4.65 - 96.13 m)
	XGA	2.7' - 9' (0.83 - 2.68 m)	2' - 33' (0.61 - 10.16 m)	0.62 - 8.31 m	3.5' - 63' (1.03 - 19.14 m)	4.5' - 80' (1.42 - 24.28 m)	6' - 129' (1.83 - 39.42 m)	9.5' - 189' (2.94 - 57.69 m)	14' - 294' (4.31 - 89.48 m)
Order Number	3797866500-SVK	3797804200-SVK	3797745100-SVK	3797745200-SVK	3797744200-SVK	3797745000-SVK	3797745400-SVK	3797744900-SVK	

DU9000 Optional Motorized Lenses



Lens Type	Ultra Wide Throw	Wide Throw	Short Throw	Standard	Long Throw 1	Long Throw 2
Model	D98-0810	D98-1215	D98-1518	D98-1824	D98-2440	D98-4070
Focus / Zoom Type	Motorized	Motorized	Motorized	Motorized	Motorized	Motorized
Zoom	1.22x	1.3x	1.19x	1.3x	1.67x	1.7x
F Number	1.8 - 1.95	2.18 - 2.66	2.5 - 2.76	2.17 - 2.46	2.1 - 2.7	2.2 - 2.57
Focal Length (f)	17.95 - 21.93 mm	25.69 - 33.22 mm	33.15 - 39.81 mm	39 - 50.7 mm	50.4 - 80.4 mm	83.93 - 146.85 mm
Throw Ratio	0.84 - 1.03:1	1.25 - 1.56:1	1.56 - 1.86:1	1.85 - 2.41:1	2.4 - 4.0:1	4.0 - 7.0:1
Image Size	68" - 217"	60" - 300"	50" - 206"	49" - 224"	47" - 230"	50" - 300"
Projection Distance	5' - 13' (1.5 - 4 m)	6.5' - 26' (1.99 - 8.03 m)	6.5' - 23' (2 - 7 m)	8' - 29.5' (2.5 - 9 m)	13' - 39' (4 - 12 m)	22.5' - 84' (6.9 - 25.5 m)
Order Number	3797805500-SVK	3797859900-SVK	3797805300-SVK	3797805200-SVK	3797805400-SVK	3797858100-SVK



Ultra-Short Throw Projector Wall Mount Bracket X1

P/N number: 3900228200



Ultra-Short Throw Projector Wall Mount U1

P/N Number: 3905279300



3D Glasses

P/N Number: 3534257700



Wi-Fi USB Dongle

Product Compatibility: DX3351, DW3321, Q7 Plus

P/N Number: 5040463200



Vivitek Corporation

46101 Fremont Blvd.
Fremont, CA 94538
Tel: 855-885-2378

www.vivitekusa.com