



Cable ID: CAT6A : WP-CAT6A-RJ45-BK CAT6A Keystone - 100M SP-CAT6A-100

**Test Summary: PASS**

Date / Time: 03/22/2019 12:40:52 PM

Operator: VERNON FURR

Model: DSX-8000

Headroom 4.2 dB (NEXT 45-78)

Software Version: V6.1 Build 3

Main S/N: 1830042

Test Limit: TIA Cat 6 Perm. Link (+All)

Limits Version: V7.1

Remote S/N: 1830132

Cable Type: Cat 6 U/UTP

Calibration Start Date:

Main Adapter: DSX-PLA804

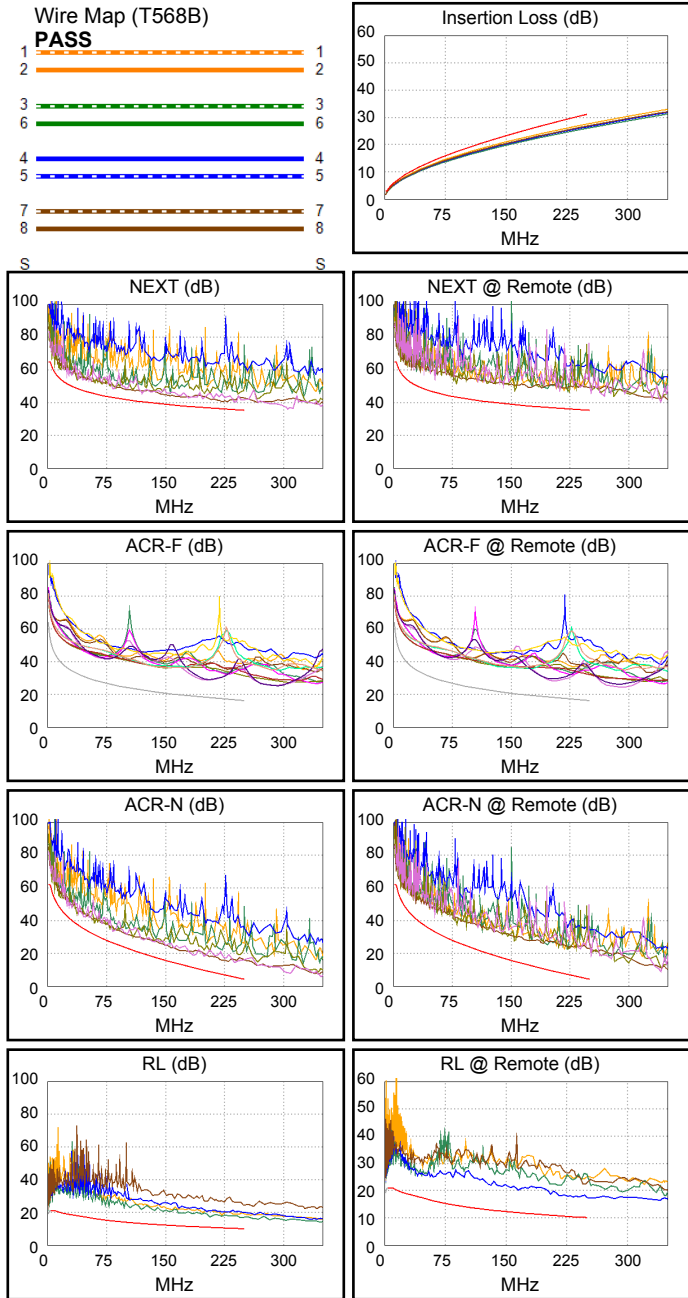
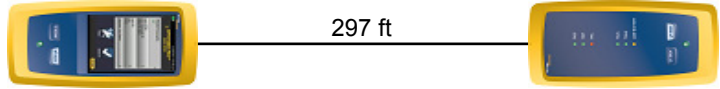
NVP: 69.0%

Main (Module): 09/17/2018

Remote Adapter: DSX-PLA804

Remote (Module): 09/17/2018

Length (ft), Limit 295	[Pair 36]	297
Prop. Delay (ns), Limit 498	[Pair 12]	458
Delay Skew (ns), Limit 44	[Pair 12]	21
Resistance (ohms), Limit 21.00	[Pair 12]	12.62
Resist. Unbal. (ohms), Limit 0.370	[Pair 36]	0.073
Resist. P2P Unbal. (ohms), Limit 0.430	[Pair 12-36]	0.098
Insertion Loss Margin (dB)	[Pair 12]	3.6
Frequency (MHz)	[Pair 12]	250.0
Limit (dB)	[Pair 12]	31.1



Worst Case Margin Worst Case Value

PASS	MAIN	SR	MAIN	SR
Worst Pair	45-78	36-78	45-78	36-78
<b>NEXT (dB)</b>	4.2	7.3	4.6	10.1
Freq. (MHz)	185.0	9.1	238.5	225.0
Limit (dB)	37.5	58.5	35.7	36.1
Worst Pair	45	36	45	36
<b>PS NEXT (dB)</b>	4.2	8.1	4.6	10.2
Freq. (MHz)	166.5	9.1	239.5	223.0
Limit (dB)	35.6	56.1	33.0	33.5

PASS	MAIN	SR	MAIN	SR
Worst Pair	36-78	36-78	36-78	36-78
<b>ACR-F (dB)</b>	10.7	10.3	10.7	10.5
Freq. (MHz)	204.0	204.5	204.0	207.5
Limit (dB)	18.0	18.0	18.0	17.8
Worst Pair	78	78	36	78
<b>PS ACR-F (dB)</b>	13.3	13.0	13.5	13.0
Freq. (MHz)	198.0	204.0	206.5	204.0
Limit (dB)	15.3	15.0	14.9	15.0

N/A	MAIN	SR	MAIN	SR
Worst Pair	36-78	36-78	45-78	36-78
<b>ACR-N (dB)</b>	5.9	7.9	8.8	14.1
Freq. (MHz)	9.1	9.1	239.0	225.0
Limit (dB)	53.2	53.2	5.4	6.8
Worst Pair	45	36	45	36
<b>PS ACR-N (dB)</b>	6.5	8.8	9.0	14.9
Freq. (MHz)	45.8	9.0	239.5	223.0
Limit (dB)	32.7	51.0	2.7	4.4

PASS	MAIN	SR	MAIN	SR
Worst Pair	36	45	36	45
<b>RL (dB)</b>	6.3	7.2	6.6	7.4
Freq. (MHz)	206.5	233.5	247.5	250.0
Limit (dB)	10.9	10.3	10.1	10.0

Compliant Network Standards:  
 10BASE-T      100BASE-TX      100BASE-T4  
 1000BASE-T      2.5GBASE-T      5GBASE-T  
 ATM-25      ATM-51      ATM-155  
 100VG-AnyLan      TR-4      TR-16 Active  
 TR-16 Passive



Cable ID: CAT6A : WP-CAT6A-RJ45-BK CAT6A Keystone - 100M SP-CAT6A-100

**Test Summary: PASS**

Date / Time: 03/22/2019 12:40:52 PM

Operator: VERNON FURR

Model: DSX-8000

Headroom 4.2 dB (NEXT 45-78)

Software Version: V6.1 Build 3

Main S/N: 1830042

Test Limit: TIA Cat 6 Perm. Link (+All)

Limits Version: V7.1

Remote S/N: 1830132

Cable Type: Cat 6 U/UTP

Calibration Start Date:

Main Adapter: DSX-PLA804

NVP: 69.0%

Main (Module): 09/17/2018

Remote (Module): 09/17/2018

Remote Adapter: DSX-PLA804

Worst Case Margin		Worst Case Value		
	MAIN	SR	MAIN	SR
<b>PASS</b>				
Worst Pair	36	12	36	78
<b>TCL (dB)</b>	9.0	7.6	9.1	19.3
Freq. (MHz)	207.0	1.0	208.0	219.5
Limit (dB)	15.3	40.0	15.2	14.9
<b>N/A</b>				
Worst Pair			78-45	78-36
<b>CDNEXT (dB)</b>			21.3	20.0
Freq. (MHz)			339.0	340.0
Limit (dB)				
<b>N/A</b>				
Worst Pair			12	78
<b>CMRL (dB)</b>			4.9	4.8
Freq. (MHz)			1.8	1.8
Limit (dB)				
<b>PASS</b>				
Worst Pair	12	12	78	78
<b>ELTCTL (dB)</b>	23.5	18.5	27.9	29.7
Freq. (MHz)	1.0	1.0	12.0	11.9
Limit (dB)	30.0	30.0	8.4	8.5

